



KALO GOLD

**Vatu Aurum: Where the Ring
of Fire Yields Fijian Gold**

TSX-V: KALO

Forward Looking Statement



General Disclaimer

This presentation of Kalo Gold Corp. (the "Company" or "Kalo") is for information only and shall not constitute an offer to buy, sell, issue or subscribe for, or the solicitation of an offer to buy, sell or issue, or subscribe for any securities in any jurisdiction in which such offer, solicitation or sale would be unlawful. The information contained in this presentation: (a) is provided as at the date of this presentation and is accurate only as of the date of this presentation or the date otherwise indicated, and is subject to change without notice; (b) does not purport to contain all the information that may be necessary or desirable to fully and accurately evaluate an investment in the Company, including important disclosures relating to the terms of an investment and risk factors associated with an investment in the Company; and (c) is not to be considered as a recommendation by the Company that any person make an investment in the Company. Where any opinion or belief is expressed in this presentation, it is based on the assumptions and limitations mentioned herein and are an expression of present opinion or belief only. No warranties or representations can be made as to the origin, validity, accuracy, completeness, currency or reliability of the information. The Company disclaims and excludes all liability (to the extent permitted by law), for losses, claims, damages, demands, costs and expenses of whatever nature arising in any way out of or in connection with the information in this presentation, its accuracy, completeness or by reason of reliance by any person on any of it. The information in this presentation is not intended to be relied upon as advice to investors or potential investors and does not take into account the investment objectives, financial situation or needs of any investor. This presentation should not be construed as legal, financial or tax advice to any individual, as each individual's circumstances are different. Readers should consult with their own professional advisors regarding their particular circumstances. Neither this presentation nor any copy of it may be taken or transmitted into or distributed in any other jurisdiction which prohibits the same, except in compliance with applicable securities laws. Any failure to comply with this restriction may constitute a violation of applicable securities law. Recipients are required to inform themselves of, and comply with, all such restrictions or prohibitions and the Company does not accept liability to any person in relation thereto. Securities legislation in certain Canadian provinces provides purchasers, in addition to any other rights they may have at law, with a remedy for rescission or damages where an offering memorandum, which this presentation may be deemed to be, or any amendment to it, contains a misrepresentation. Please see Appendix A for more details.

This presentation does not constitute an offer to sell or the solicitation of an offer to buy, nor shall there be any sale of securities of the Company in any jurisdiction in which an offer, solicitation or sale would be unlawful prior to registration or qualification under the securities laws of such jurisdiction. The securities of the Company described herein have not been and will not be registered under the United States federal or state securities laws and may not be offered or sold in the United States, or to, or for the account or benefit of, "U.S. Persons" as such term is defined in Regulation S under the United States Securities Act of 1933, as amended (the "1933 Act"), unless an exemption from registration is available. Prospective investors will be required to represent, among other things, that they meet the definition of "accredited investor" (as defined in Rule 501(a) of the 1933 Act) and are familiar with and understand the terms of the offering and have all requisite authority to make an investment. Securities sold in the United States will be "restricted securities" within the meaning of Rule 144 under the 1933 Act. The securities may be resold, pledged or otherwise transferred only pursuant to an effective registration statement under the 1933 Act or pursuant to an applicable exemption from the registration requirements of the 1933 Act. IN MAKING AN INVESTMENT DECISION, INVESTORS MUST RELY ON THEIR OWN EXAMINATION OF THE COMPANY AND THE TERMS OF THE OFFERING, INCLUDING THE MERITS AND RISKS INVOLVED. THE SECURITIES HAVE NOT BEEN APPROVED OR DISAPPROVED BY THE SECURITIES AND EXCHANGE COMMISSION OR BY ANY STATE OR CANADIAN SECURITIES COMMISSION OR REGULATORY AUTHORITY, NOR HAS ANY OF THE FOREGOING PASSED ON THE ACCURACY OR ADEQUACY OF THIS PRESENTATION. ANY REPRESENTATION TO THE CONTRARY IS A CRIMINAL OFFENSE.

Cautionary Note Regarding Forward-Looking Statements: This presentation includes information, statements, beliefs and opinions concerning the business, operations and financial performance and condition of the Company, which constitute forward-looking statements under applicable Canadian securities laws, and can be identified by the use of language such as "plans", "expects", "is expected", "budget", "scheduled", "estimates", "forecasts", "intends", "anticipates", "believes", or variations or comparable language of such words and phrases or statements that certain actions, events or results "may", "could", "would", "should", "might" or "will be taken", "occur" or "be achieved" or the negative connotation thereof. Forward-looking statements in this presentation include statements regarding: the Company's belief that it has a star mineral property in the making; the Company's expectations regarding its ability to obtain the permits, licenses and credentials required to continue operating the Property; estimated mineral reserves and mineral resources; the realization of mineral reserve estimates; the future price of gold; proposed exploration programs; and the ability of the Company to sustain and project capital expenditures required to continue operations with respect to the Property. By their nature, forward-looking statements involve a number of risks, uncertainties and assumptions that could cause actual results or events to differ materially from those expressed or implied by the forward-looking statements. These risks, uncertainties and assumptions could adversely affect the outcome and financial effects of the plans and events described in this presentation. Such risks, uncertainties and other factors include: fluctuations in the price of gold; opposition to development and mining operations by one or more groups of indigenous people; actions that impede or prevent the operations of the Company's exploration or mining activities; the inability to develop and operate the Company's mineral properties; social unrest and political or economic instability and uncertainties in the jurisdictions in which the Company operates; the timing and ability to maintain and, where necessary, obtain and renew necessary permits and licenses; changes in national and local government legislation, taxation and controls or regulations; environmental and other governmental regulation compliance; uncertainty in the estimation of mineral resources and mineral reserves; fluctuations in currency exchange rates; infrastructure risks, including access to roads, water and power; and the timing and possible outcome of pending or threatened litigation and the risk of unexpected litigation.

Forward-looking statements in this presentation are based on management's current estimates, expectations and projections, which management believes are reasonable as of the current date. Assumptions have been made regarding, among other things: the Company's expected performance and ability to implement operational improvements for the Property; the Company's ability to carry on exploration and development activities, including land acquisition and construction; the timely issuance and/or re-issuance upon expiration of permits and other approvals; the availability and sufficiency of power and water for operations; the price of gold; prices for key exploration and mining supplies, including labor costs and consumable; plant, equipment and processes operating as anticipated; there being no material variations in the current tax and regulatory environment; the Company's ability to operate in a safe, efficient and effective manner; the exchange rates between the Canadian dollar and the Fiji dollar, remaining consistent with current levels; and the Company's ability to obtain financing as and when required and on reasonable terms.

You should not place undue reliance on forward-looking statements, which are based on the information available as of the date of this presentation. The Company disclaims any intention or obligation to update or revise any forward-looking statements contained in this presentation, whether as a result of new information, future events or otherwise, unless required by applicable law. The forward-looking statements included in this presentation are expressly qualified by this cautionary statement.

The technical information in this presentation was reviewed by Andrew Randell, P. Geo a qualified person as defined by National Instrument 43-101. The independent report filed on SEDAR titled "Independent NI 43-101 Technical Report on the Vatu Aurum Gold Project", amended September 9, 2021, contains full disclosure with regards to historical resource estimates referenced in this presentation.

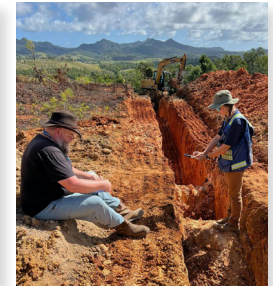


Kalo Gold Corp is focused on the discovery and exploration of multiple epithermal gold systems within the district scale Vatu Aurum Project, Fiji.

The Vatu Aurum Project, encompassing **367 km²**, is our primary focus, representing a significant opportunity in the Pacific's "Ring of Fire."

The Kalo Team

commitment, pride and focus on geology and exploration - providing an exciting path to discovery



Our Vision: To transform the Vatu Aurum Project into a world-class, multi-deposit gold district.



Our Mission: Unlock the full potential of district-scale epithermal gold systems through sustainable exploration.

Investment Highlights



Fiji's Next World-Class Epithermal Gold District



100%

100% ownership

367 km² district-scale property located along the Nubu Graben Fault



World-Class Region

Hundreds of millions of ounces of gold and copper produced, and large amounts in reserves



CAD\$30M in Exploration Data

Extensive geophysical, geochemical, and drilling data collected over 30 years



Recent Discoveries

Twenty intact epithermal upwelling zone targets identified in the Aurum Epithermal Field (Namalau, Loma and Buca Trends) and five gold targets in the Qiriyaga Complex (diatremes and associated surge deposits)



Experienced Technical Team

CEO Terry L. Tucker, P.Geo, with 30+ years in mineral exploration, and Andy Randell, P.Geo, of SGDS Hive, driving innovative exploration



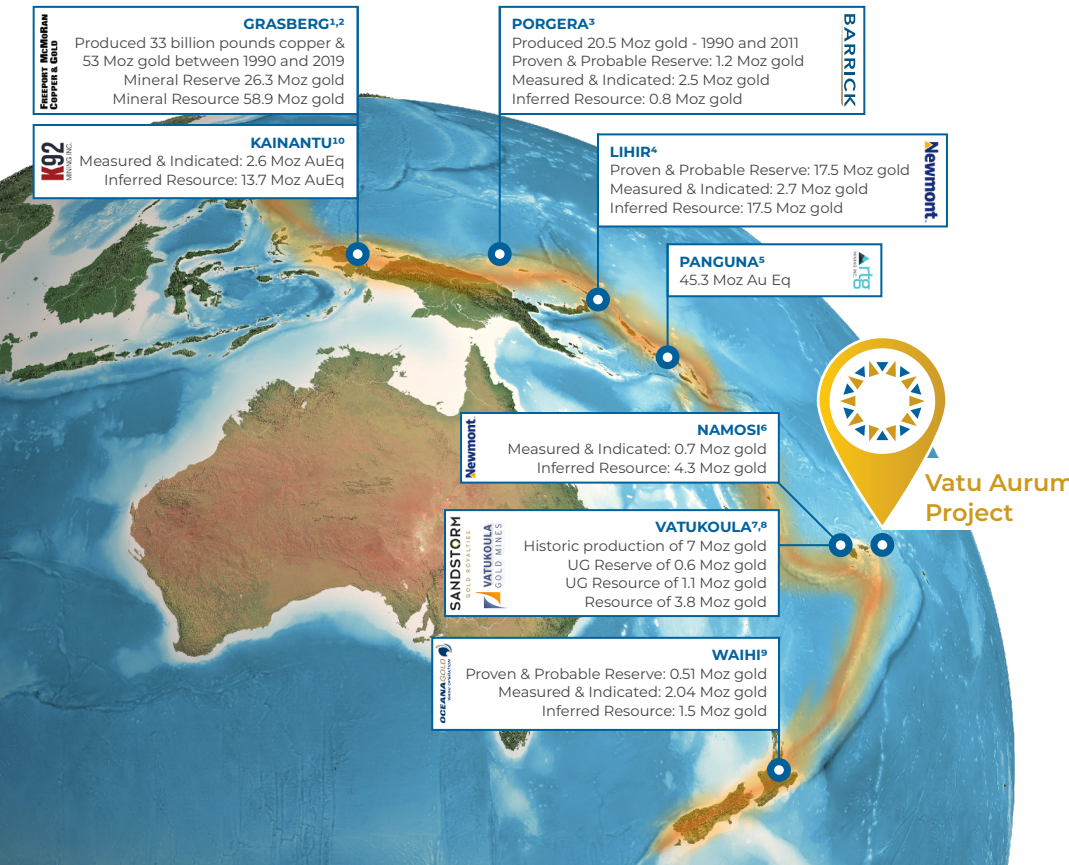
Upcoming Drill Campaign

A 9,000-meter drill program will systematically test the Namalau Trend's upwelling zones, targeting high-priority areas for resource expansion

Ring of Fire



The Land of Giant Gold Deposits



Kalo Gold Advantage
 Positioned to deliver major discoveries in this proven gold belt



Epithermal Gold Systems
 Intense volcanic and tectonic activity creates rich deposits



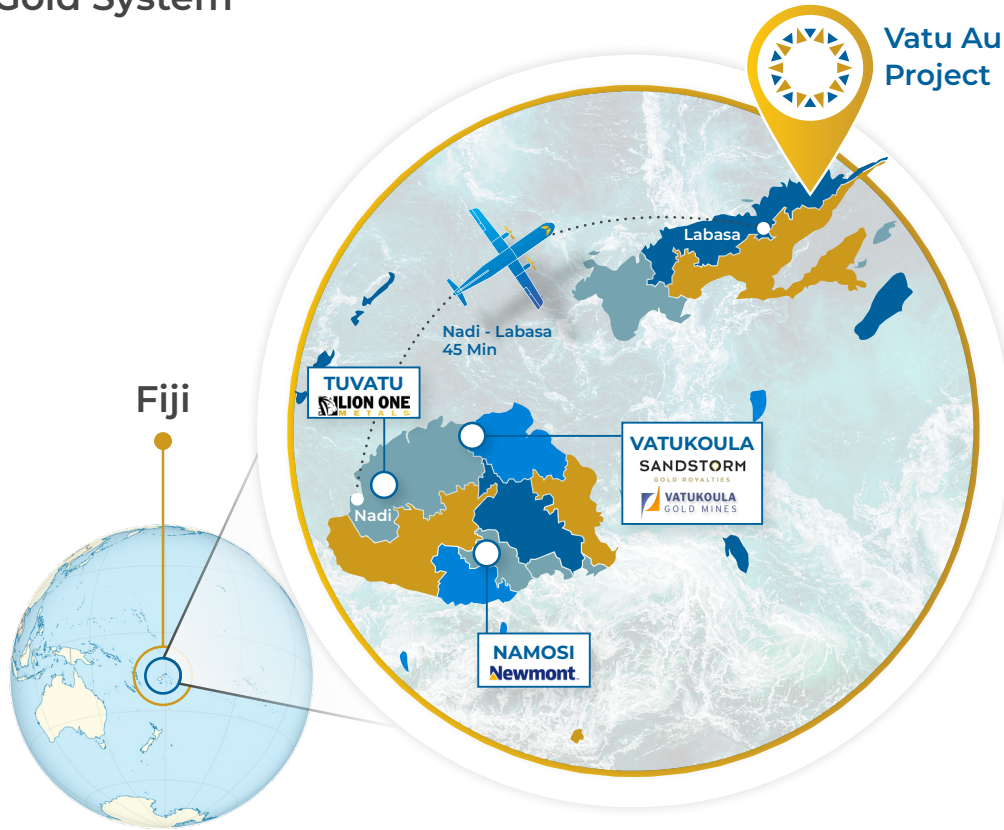
Prolific Region
 249 Moz of Gold and 33 B lbs of copper discovered to date

- ▶ 1 Freeport-McMoRan
- ▶ 2 Freeport-McMoRan 31 Dec 2022
- ▶ 3 Barrick Gold Corp
- ▶ 4 Newmont
- ▶ 5 RTG Mining Inc
- ▶ 6 Newmont
- ▶ 7 Sandstormgold
- ▶ 8 Vatukoula Gold Mines
- ▶ 9 Oceana Gold
- ▶ 10 K92 Gold

Note: Details of other mines and resources is provided for information only and is not necessarily an indication of potential size, grades or production potential of Kalo projects

Gold in Fiji

Unveiling Fiji's Next Epithermal Gold System



Location

On Fiji's Vanua Levu Island in a premier geological setting



Scale

367 km² package with multiple targets along the 28 km long Nubu Graben



History

Vatukoula Gold Mine has produced 7 Moz gold¹, Newmont is advancing the 5 Moz gold Namosi Project² and Tuvatu Gold Mine was recently put into production

▶ 1 Vatukoula Gold Mines
▶ 2 Newmont

Vatu Aurum Project

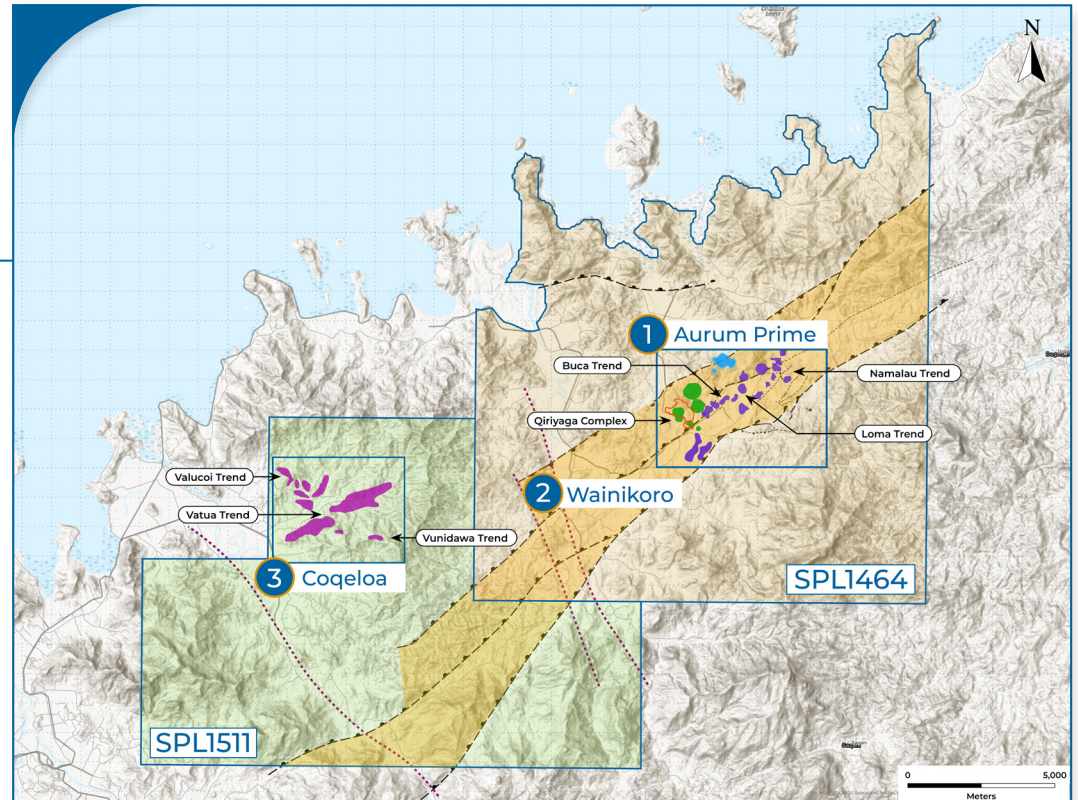


A District-Scale Opportunity

Hosts the Nubu Graben
28 km Prospective Corridor

367 km² Land Package

- ▶ 1 Aurum Prime
- ▶ 2 Wainikoro
- ▶ 3 Coqeloa



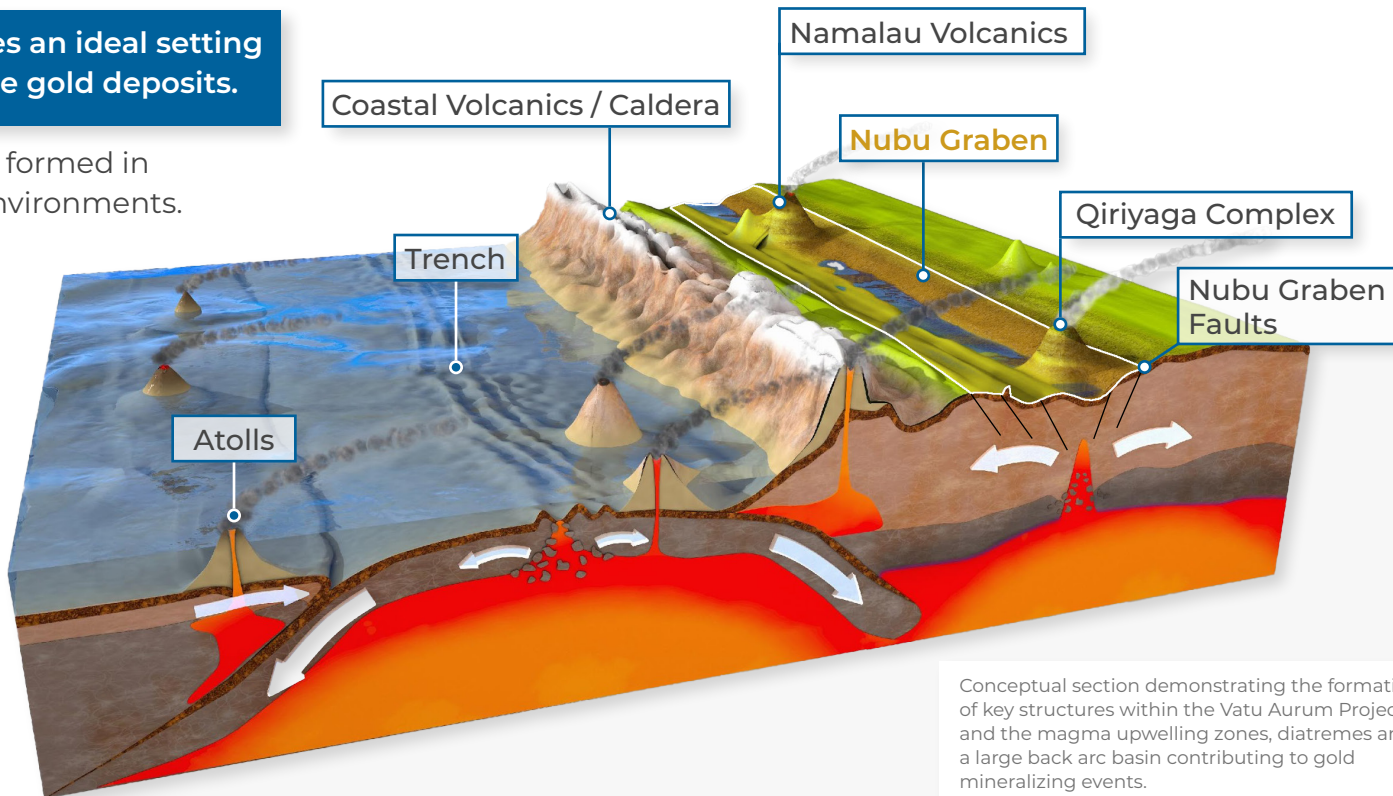
Epithermal Deposits



Fiji Geology

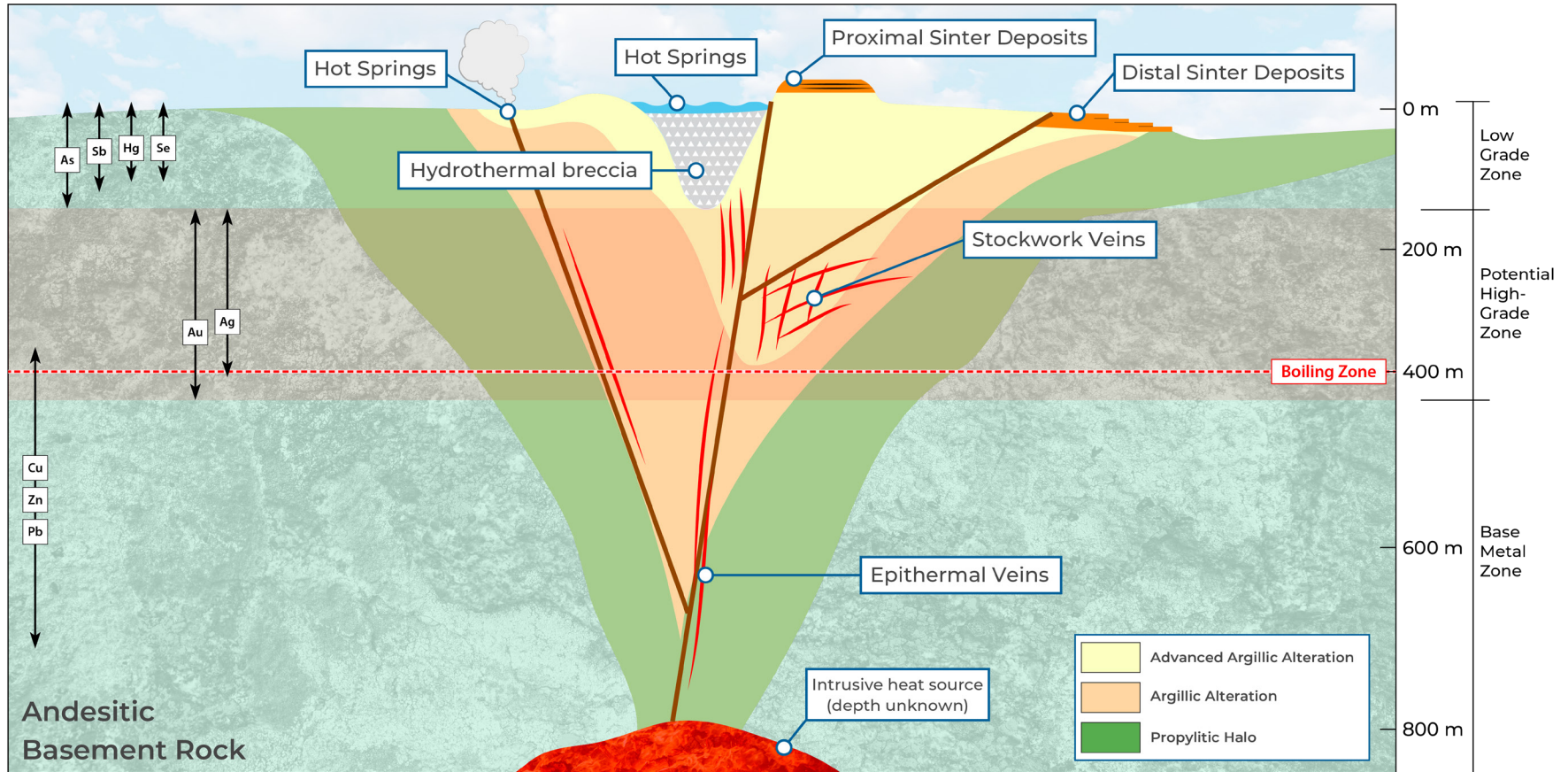
Fiji's geology creates an ideal setting for large, high-grade gold deposits.

Epithermal systems formed in dynamic volcanic environments.



Conceptual section demonstrating the formation of key structures within the Vatu Aurum Project, and the magma upwelling zones, diatremes and a large back arc basin contributing to gold mineralizing events.

Understanding Zonation



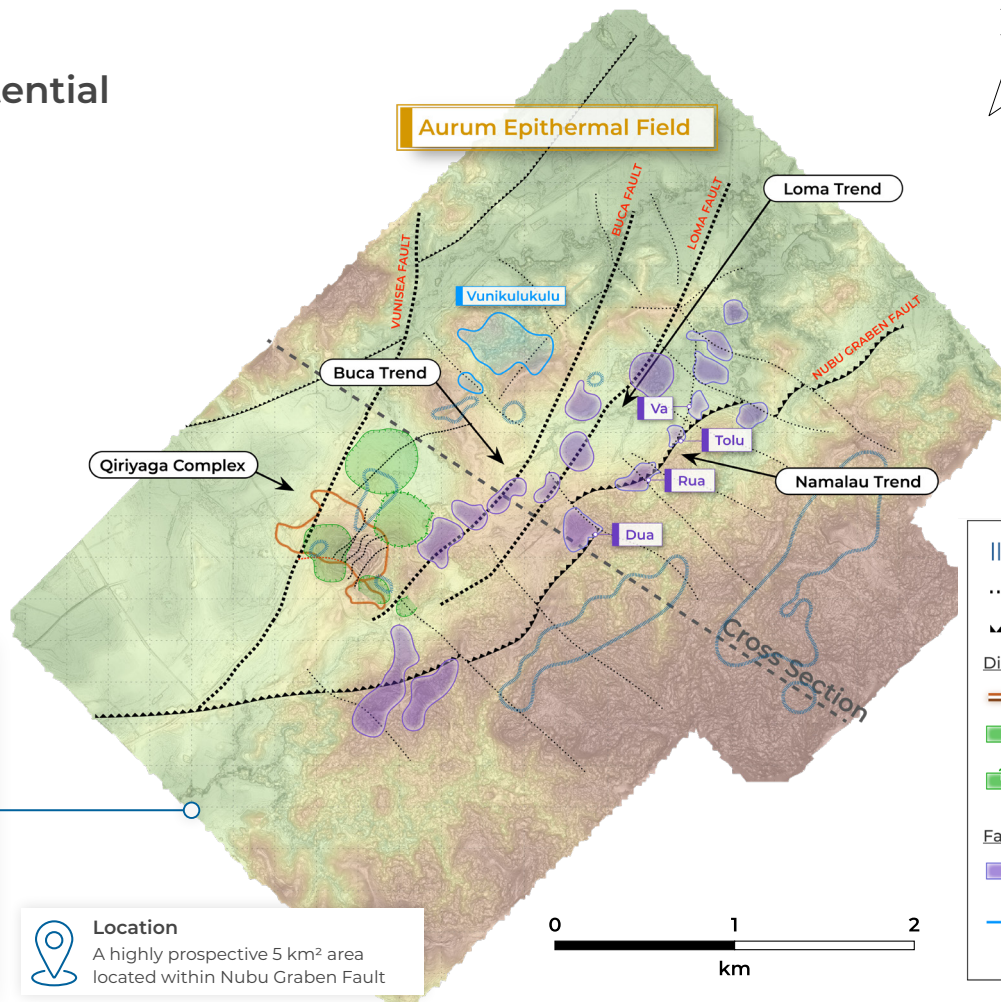
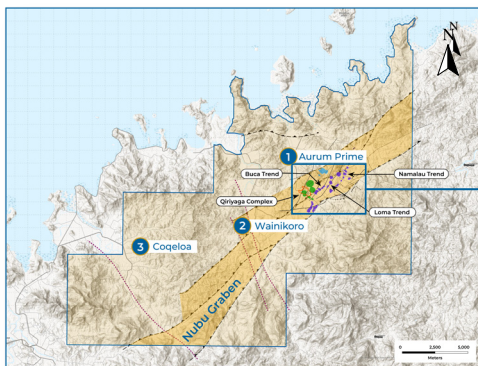
Aurum Prime

Unlocking the Deeper Potential

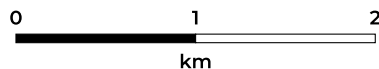


Trench ID	Width (m)	Au (g/t)
TRNAT05	46	0.42
TRQET3	38	0.36
TRCT03	64	0.38
TRVR11	62	0.45
TRVT12	20	0.87
TRVPR	96	1.46
TRQET1	28	0.62
TRCT05	84	0.44
TRNAT02	2	4.53

Namalau, Buca, Loma - Trench results



Location
A highly prospective 5 km² area located within Nubu Graben Fault



- CSAMT Deep anomaly (-200m)
- Fault
- Graben Fault
- Diatreme Related Structures**
 - Surge Deposits
 - Diatreme +Se, -K in Halo
 - Possible Diatreme +Se, -K in Halo
- Fault Related Zones**
 - Epithermal Upwelling Zone +Se, -Bi, -K
 - Pinnacle Reef Upwelling Zone +Se, -Bi, -K

Qiriyaga Complex

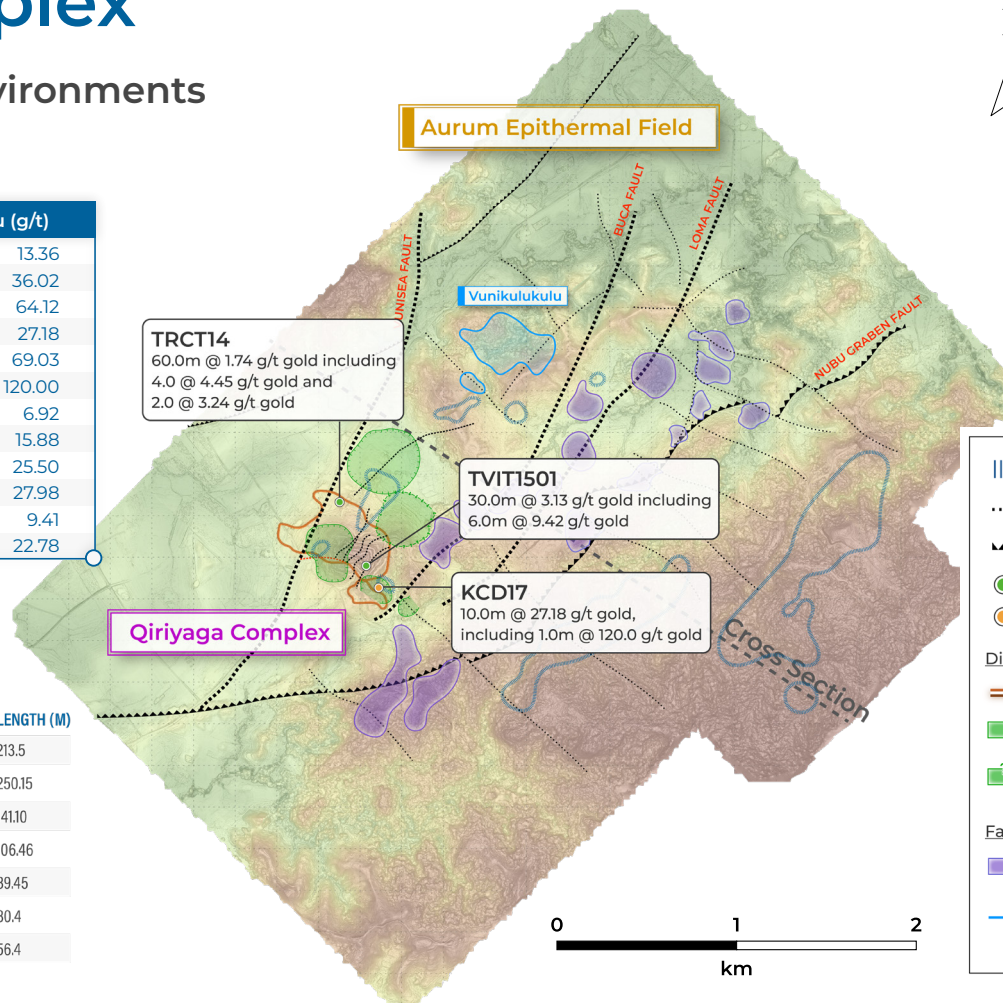
Two gold depositional environments



Hole ID	From (m)	From (m)	Width* (m)	Au (g/t)
KCD02*	73.0	83.0	10.0	13.36
KCD17*	61.3	70.0	8.8	36.02
including	61.3	66.0	4.8	64.12
and	76.0	86.0	10.0	27.18
including	80.0	83.0	3.0	69.03
including	81.0	82.0	1.0	120.00
KCD22*	26.0	46.0	20.0	6.92
KCD18*	64.00	70.00	6.00	15.88
including	64.00	65.00	1.00	25.50
and	68.00	70.00	2.00	27.98
KCD20*	51.00	57.00	6.00	9.41
including	52.00	54.00	2.00	22.78

Qiriyaga Complex - Diamond drill results

Drill Hole	DATUM	EASTING	NORTHING	ELEV (M)	DIP	DIR	LENGTH (M)
FCD08	WGS84 60S	779017	8194161	89	-90	0	213.5
KCD02	WGS84 60S	779056	8194124	67	-70	142	250.15
KCD14	WGS84 60S	778976	8194230	90	-60	142	141.10
KCD17	WGS84 60S	779041	8194104	67	-50	142	106.46
KCD18	WGS84 60S	779033	8194094	69	-50	142	89.45
KCD20	WGS84 60S	779075	8194044	60	-58	319	80.4
KCD22	WGS84 60S	779059	8194167	76	-50	322	56.4



TRCT14
60.0m @ 1.74 g/t gold including
4.0 @ 4.45 g/t gold and
2.0 @ 3.24 g/t gold

TVIT1501
30.0m @ 3.13 g/t gold including
6.0m @ 9.42 g/t gold

KCD17
10.0m @ 27.18 g/t gold,
including 1.0m @ 120.0 g/t gold

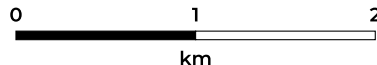
- CSAMT Deep anomaly (-200m)
- Fault
- Graben Fault
- Trench Highlights
- Drill Highlights

Diatreme Related Structures

- Surge Deposits
- Diatreme +Se, -K in Halo
- Possible Diatreme +Se, -K in Halo

Fault Related Zones

- Epithermal Upwelling Zone +Se, -Bi, -K
- Pinnacle Reef Upwelling Zone +Se, -Bi, -K



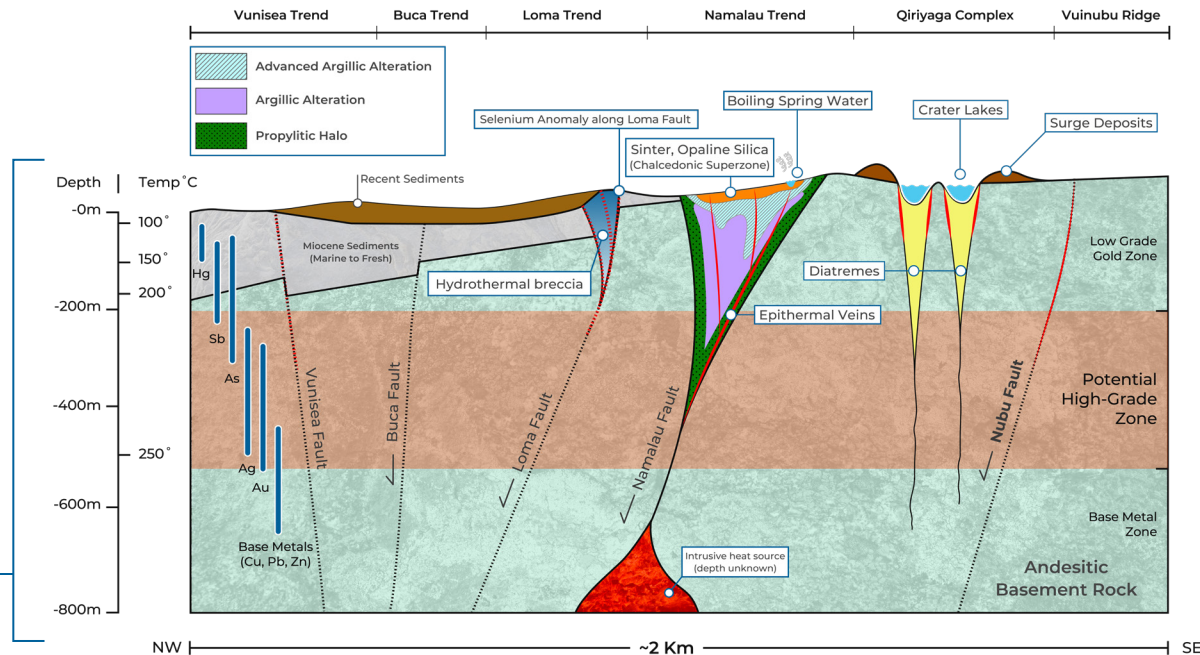
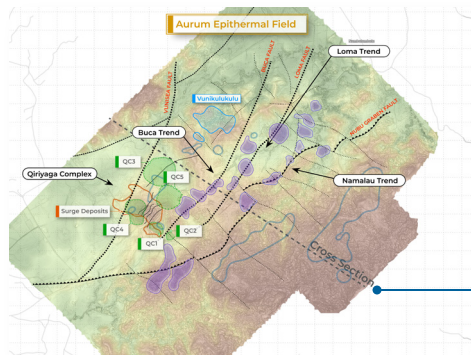
Aurum Epithermal Field



Cross Section

20 epithermal and 5 diatreme and surge deposit related gold targets with proven surface mineralization and untapped depth potential.

Aurum Prime



Conceptual cross section demonstrating potential gold mineralization in the Aurum epithermal field.

Namalau Trend

Selenium Soil Sampling



34 78.971

Se

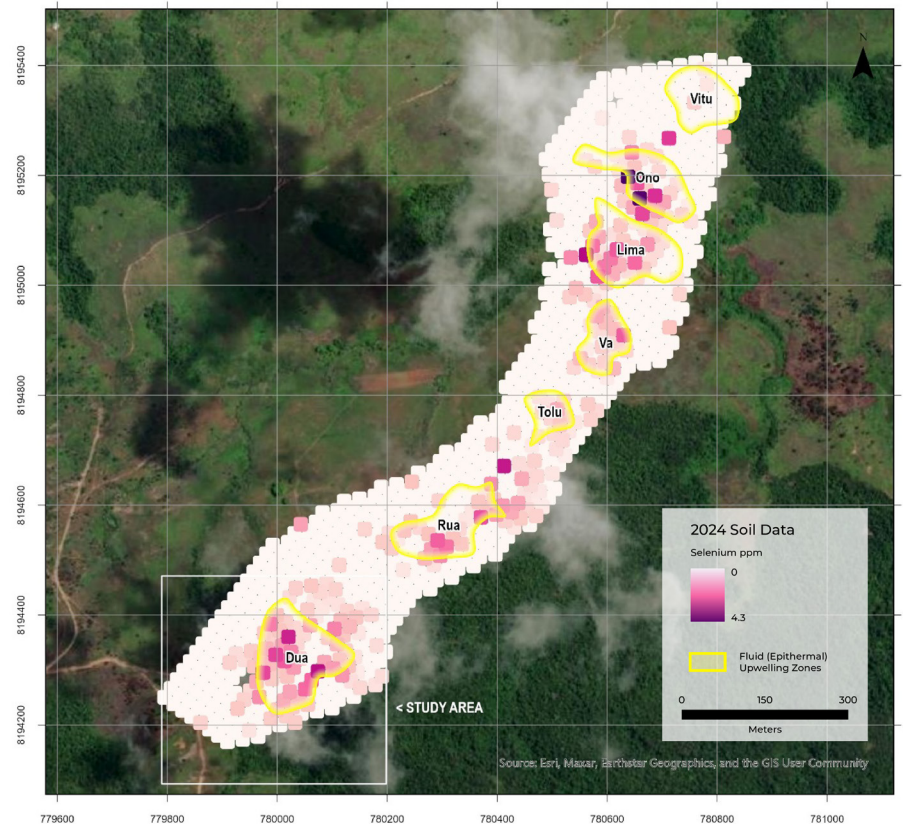
selenium

Selenium

Sampling Finds

Exploration has identified seven new “epithermal upwelling zones” along the 1.5 km Namalau Trend.

These gold targets feature hydrothermal sinters with elevated selenium, mercury, and arsenic in soils, a geochemical signature of epithermal gold deposits, indicating a large hydrothermal system.



Namalau Trend

Potassium Soil Sampling



19 39.0983

K

potassium

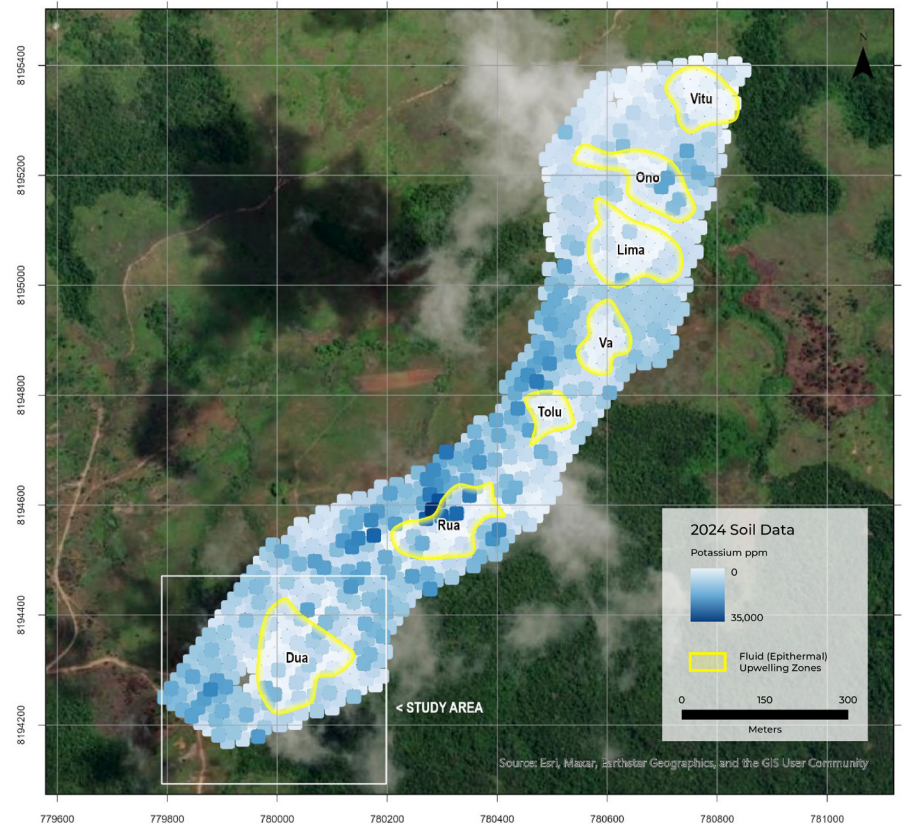


Potassium

Sampling Finds

Soil geochemistry reveals potential upwelling zones where acidic fluids deplete potassium, creating low-value “potassic depletion centers” surrounded by higher values linked to argillic alteration.

These centers may point to precious metals at depth, making them valuable exploration targets.



Cross-Section

Comparison of Aurum Prime Targets to Waihi District Deposits

Waihi operation is located in the Waihi township on the North Island of New Zealand within a district that has produced 8 Moz of gold to date.



Aurum Prime Targets Cross Section



Waihi District Cross Section

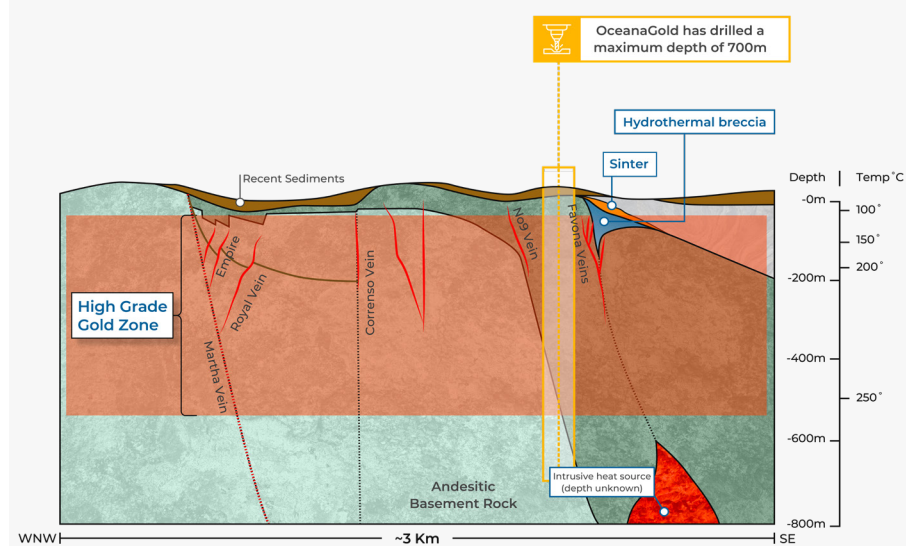
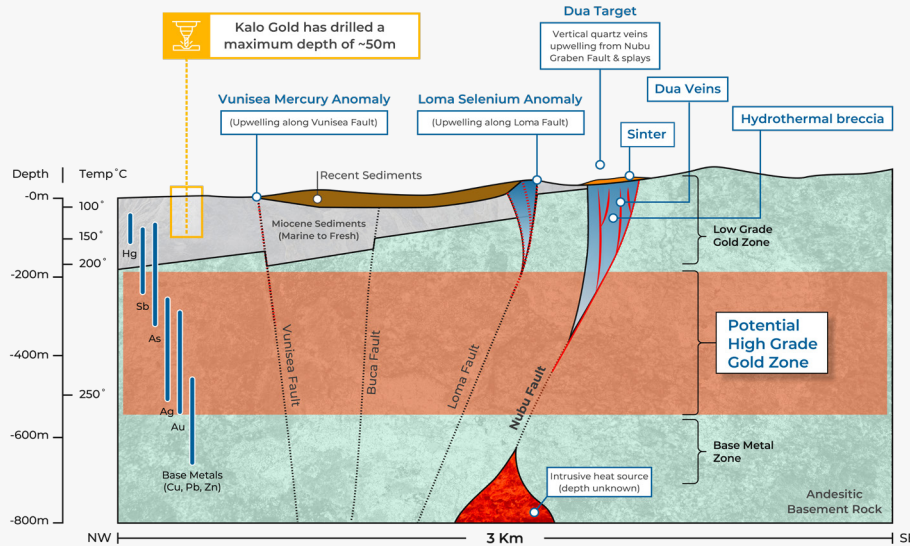


Early exploration stage;
no formal resource estimate

>3 km across multiple
epithermal vein systems

>8M oz historical production,
and M&I of 1.52M oz gold

>3 km across
multiple vein systems



Exploration Program



September 17, 2024

Commencement of field work - soil sampling and geological mapping

December 12, 2024

Field program continues with 24/6 XRF analysis and sample prep - 12,601 soil samples at a 20 m X 20 m grid spacing covering Aurum Prime 2,156 trench samples collected in 34 trenches.

January 17, 2025

Continued soil sampling of Aurum Prime including new Walu Target upwelling zone

February 12, 2025

Confirmation of high-potential epithermal gold system

February 26, 2025

Extensive epithermal gold system at Aurum Prime with 25 high priority targets

November 7, 2024

Namalau Discovery and seven prospective upwelling epithermal targets and release of 929 soil sample results

January 17, 2025

TerraSpec analytical work on 2,156 trench samples from 34 trenches in Namalau Trend commences

January 20, 2025

Confirmation of discovery of upper level of epithermal gold system, Dua Target

February 24, 2025

Discovery of the Qiriyaga Complex

June 2025

Namalau Trend Diamond Drilling Dua, Rua, Tolu and Va

Kalo Gold Discovers Seven Epithermal Gold Targets Along The 100% Owned, District-scale Namalau Trend, Vatu Aurum Project, Fiji

Kalo Gold Confirms Discovery Of Upper Level Of Epithermal Gold System, Dua Target, Vatu Aurum Project, Fiji

Kalo Gold Unveils High-Potential Epithermal Gold System at Vatu Aurum Project, Fiji, with Geological and Geochemical Signatures Comparable to Major Pacific Rim Gold Deposits

Kalo Gold Identifies Three Gold Depositional Environments with the Discovery of the Qiriyaga Complex, Vatu Aurum Project, Fiji

Kalo Gold Confirms Extensive Epithermal Gold System at Aurum Prime with 25 High-Priority Targets Identified

Kalo Gold Renews SPL 1511, Reclassifies Coqeloa as High-Priority Vertically Preserved Epithermal Gold Target at Vatu Aurum Project, Fiji

News Release

November 7, 2024

News Release

January 20, 2025

News Release

February 12, 2025

News Release

February 24, 2025

News Release

February 26, 2025

News Release

Apr 9, 2025

Capital Structure



TSXV: **KALO**

Shares Issued	192.2 M
Options	11.6 M
Warrants	0 M
Restricted Share Units	16.6 M
Fully Diluted	220.4 M

*Information as of March 2025



Institutions 52%

Insiders 18%

Retail 30%

Management Team



MANAGEMENT

- ▶ **TERRY L. TUCKER, P.GEO**
Director, President and CEO

- ▶ **KEVIN MA, CPA, CA EVP,**
Director & Executive Vice
President, Capital Markets,
Interim CFO & Corporate
Secretary

- ▶ **MICHAEL NESBITT, BSC**
Director, Co-Founder, Senior
In-Country Manager

BOARD OF DIRECTORS

- ▶ **DAVID WHITTLE, CPA, CA**
Chairman

- ▶ **CAM GRUNDSTROM**
Mining Engineer
Co-Founder

- ▶ **DICKSON LAM**
Ascentas Capital Management

GEOLOGICAL & TECHNICAL TEAM



- ▶ **ANDY RANDELL,**
P.Geo SGDS Hive

- ▶ **CALEY DUNLOP, B.SC. GEOLOGY**
SGDS Hive

- ▶ **ZACH BUEHLER, B.SC. GEOLOGY**
SGDS Hive

SPECIAL ADVISORS

- ▶ **PAUL HARBIDGE, BSC, MSC**
Former SVP, Exploration at Goldcorp
President and CEO, Faraday Copper Corp.



FARADAY COPPER

- ▶ **ALASTAIR STILL, MSC**
Former Director of Corp Dev at Newmont
CEO at GoldMining Inc.
Co-Founder and Chairman of U.S.
GoldMining Inc.

GOLDMINING

- ▶ **DAVID MEDILEK, P.ENG, CFA**
President and COO at K92 Mining Inc.

K92
MINING INC.

Market Opportunity

Record highs in gold prices, driven by inflation and central bank demand.

▶ Goldman Sachs

Projected growth

Goldman Sachs sees gold surpassing \$3,000/oz

February 21st, 2025

Gold reaches all-time high of **\$2937.60 / ounce**



Sustainability & Community Development



Kalo Gold Corp prioritizes sustainable exploration by engaging communities, respecting heritage, and minimizing environmental impact with modern, low-impact techniques.

Responsible Consumption & Production

Minimizing environmental impact through responsible resource management and sustainable exploration methods

Climate Action

Adopting industry best practices to reduce emissions and ecological footprints during operations

Life on Land

Committed to environmental stewardship by preserving ecosystems, rehabilitating disturbed areas, and minimizing surface impact



Decent Work and Economic Growth

Prioritizing local employment by hiring and training Fijian workers
Supporting economic development in local communities through sustainable exploration practices

Gender Equality

Promoting inclusivity and equal opportunities within the workforce, supporting women in leadership and operational roles

Clean Water and Sanitation

Ensuring responsible water use and protecting local water sources through proper exploration and environmental management practices

Partnerships for the Goals

Fostering partnerships with communities, governments, and industry to align exploration with regional development goals

Thank You



KALO GOLD

TSX-V: KALO



► Turani, Wolfoo and Honey

► Kalo Gold Corp.

Vancouver, British Columbia,
Canada.

kalogoldcorp.com

Terry Tucker

terry@kalogoldcorp.com

Kevin Ma

kevin@kalogoldcorp.com



Appendix

Aurum Prime

Comparison of Aurum Prime Targets to Waihi District Deposits

1. Based on historical production as described in the NI 43-101 Technical Report, Waihi District – Martha Underground Feasibility Study dated March 31, 2021.
2. Based on reported Resources and Reserves for the year ended 2023, see February 21, 2024, news release for more details.

News Release



KALO GOLD

Market Cap: **13.4M**



Market Cap: **2.9B**

Project	<ul style="list-style-type: none"> Aurum Prime Targets 	<ul style="list-style-type: none"> Waihi District Deposits
Location	<ul style="list-style-type: none"> Republic of Fiji - Pacific Ring of Fire 	<ul style="list-style-type: none"> New Zealand - Pacific Ring of Fire
Project	<ul style="list-style-type: none"> >28 km strike length across multiple vein systems 	<ul style="list-style-type: none"> >3 km across multiple vein systems
Geological Setting	<ul style="list-style-type: none"> Low-sulphidation epithermal system in volcanic sequences (andesite-rhyolite) 	<ul style="list-style-type: none"> Low-sulphidation epithermal system in volcanic sequences (andesite-rhyolite)
Structural Controls	<ul style="list-style-type: none"> Nubu Graben Fault and extensional faulting 	<ul style="list-style-type: none"> Waihi Fault Zone and associated structures
Alteration Features	<ul style="list-style-type: none"> Silica-clay-pyrite zones, hydrothermal breccias 	<ul style="list-style-type: none"> Silica-clay-pyrite zones, hydrothermal breccias
Mineralization	<ul style="list-style-type: none"> Gold-silver hosted in quartz veins and breccias 	<ul style="list-style-type: none"> Gold-silver hosted in quartz veins and breccias
Presence of Sinter	<ul style="list-style-type: none"> Observed, indicating the top of the epithermal system 	<ul style="list-style-type: none"> Observed in areas, indicative of shallow epithermal conditions
Presence of Selenium	<ul style="list-style-type: none"> Elevated selenium levels up to 4.4 ppm in soils, indicative of epithermal systems 	<ul style="list-style-type: none"> Selenium-bearing minerals observed in antimony- and arsenic-rich zones within epithermal veins
Depth Potential	<ul style="list-style-type: none"> Only drilled up to ~50 meters in vertical depth, Gold grades expected to increase at depth, as supported by sinter and breccias 	<ul style="list-style-type: none"> High-grade zones have been delineated between 700 meters below the surface
High-Grade Intercepts	<ul style="list-style-type: none"> 8.75m @ 36.02 g/t Au, 20m @ 6.92 g/t Au, 10m @ 27.18 g/t Au, 6m @ 15.88 g/t Au, 101m @ 0.94 g/t Au 	<ul style="list-style-type: none"> 25.4m @ 38.7 g/t Au, 64.5 g/t Ag (East Graben Vein), 11.1m @ 60.5 g/t Au, 137.2 g/t Ag (East Graben Vein), 5.9m @ 51.3 g/t Au, 85.3 g/t Ag
Mineral Resource Estimate	<ul style="list-style-type: none"> Early exploration stage; no formal resource estimate 	<ul style="list-style-type: none"> >8M oz historical production¹ and M&I of 1.52M oz gold²