

# South Pacific Identifies New Mineralized Zones at Golkona South, Anga Project

Vancouver, British Columbia--(Newsfile Corp. - October 14, 2025) - [South Pacific Metals Corp.](#) (TSXV: SPMC) (OTCQB: SPMEF) (FSE: 6J00) ("**SPMC**" or the "**Company**") is pleased to announce the discovery of a new **gold-copper mineralized zones at Golkona South**, part of the Company's **Anga Project** in Papua New Guinea. The Anga Project lies immediately northeast of, and contiguous with, **K92 Mining's** tenements in the Kainantu District — a highly prospective gold-copper district in PNG.

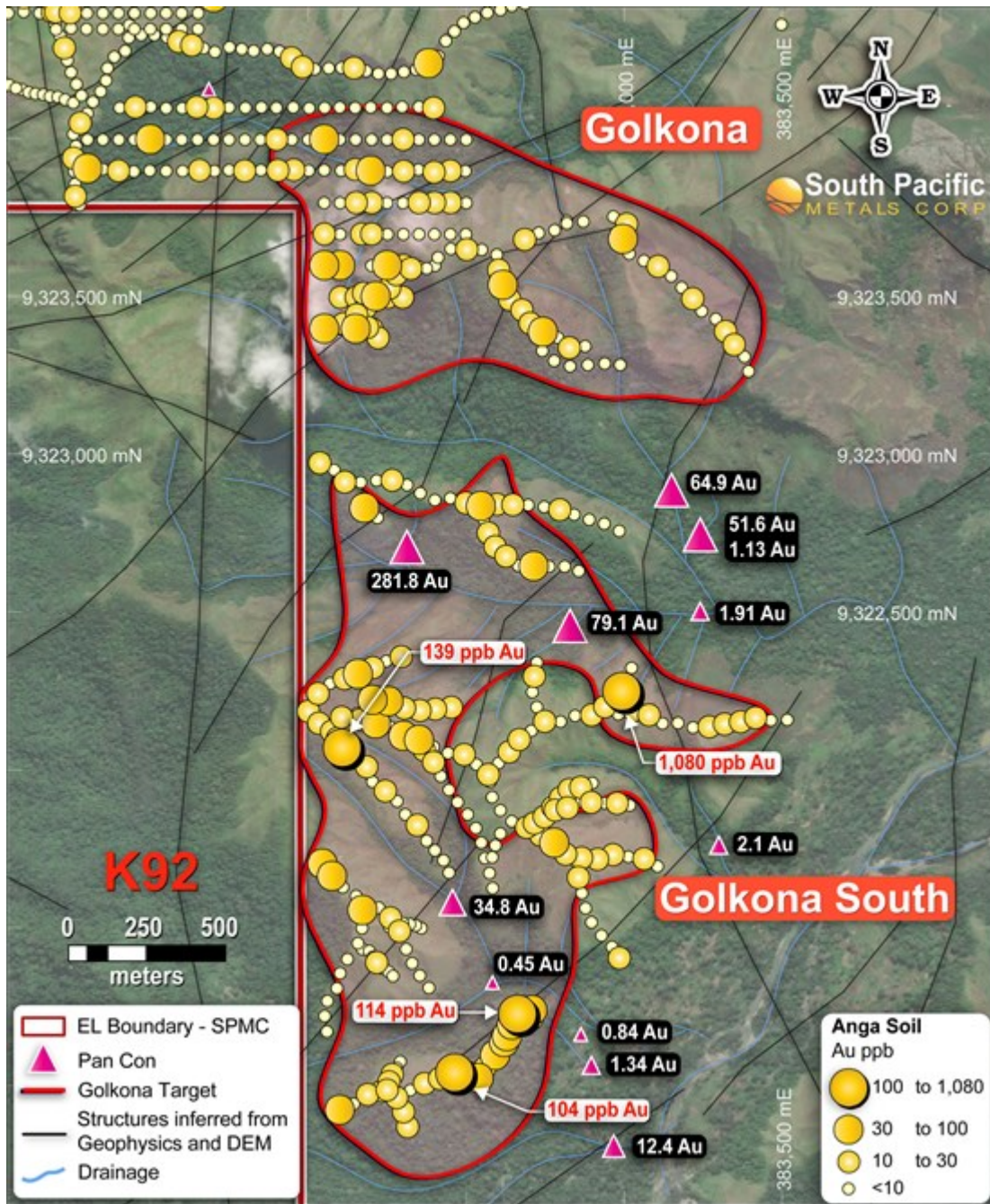
## Highlights — Golkona South:

- **2.2 × 1.1 km gold in soil anomaly** identified, with high soil assays (peak value **1080 ppb Au**) the highest soil gold values reported on the Anga project to date.
- **Two zones of high copper (over 1000ppm Cu) and silver (over 250 ppb Ag) in soil samples** with peak results up to **3,397 ppm Cu** and **2160 ppb Ag** - within the broader gold in soil anomaly mentioned above.
- **Panned concentrate samples** from streams draining Golkona South contain up to **282 ppm Au**, indicating a local source.
- The anomalous area is coincident with **mobile MT conductivity** features, which correlate with known deposits in the Kainantu region.
- **Regional interpretation** reveals a northeasterly trend to the geophysical and structural features, with K92's Arakompa deposit along that trend to the southwest.

## Next Steps:

- **Geochemical sampling** will continue at **Golkona South**, the adjacent **Golkona prospect** and the broader Anga tenement. Geological reconnaissance and mapping at **Golkona South** and **Golkona prospect** will help to understand the nature of the mineralisation and its prospectivity.
- This information, together with past geochemistry and geophysics, will be used to help define **initial drill targets**.

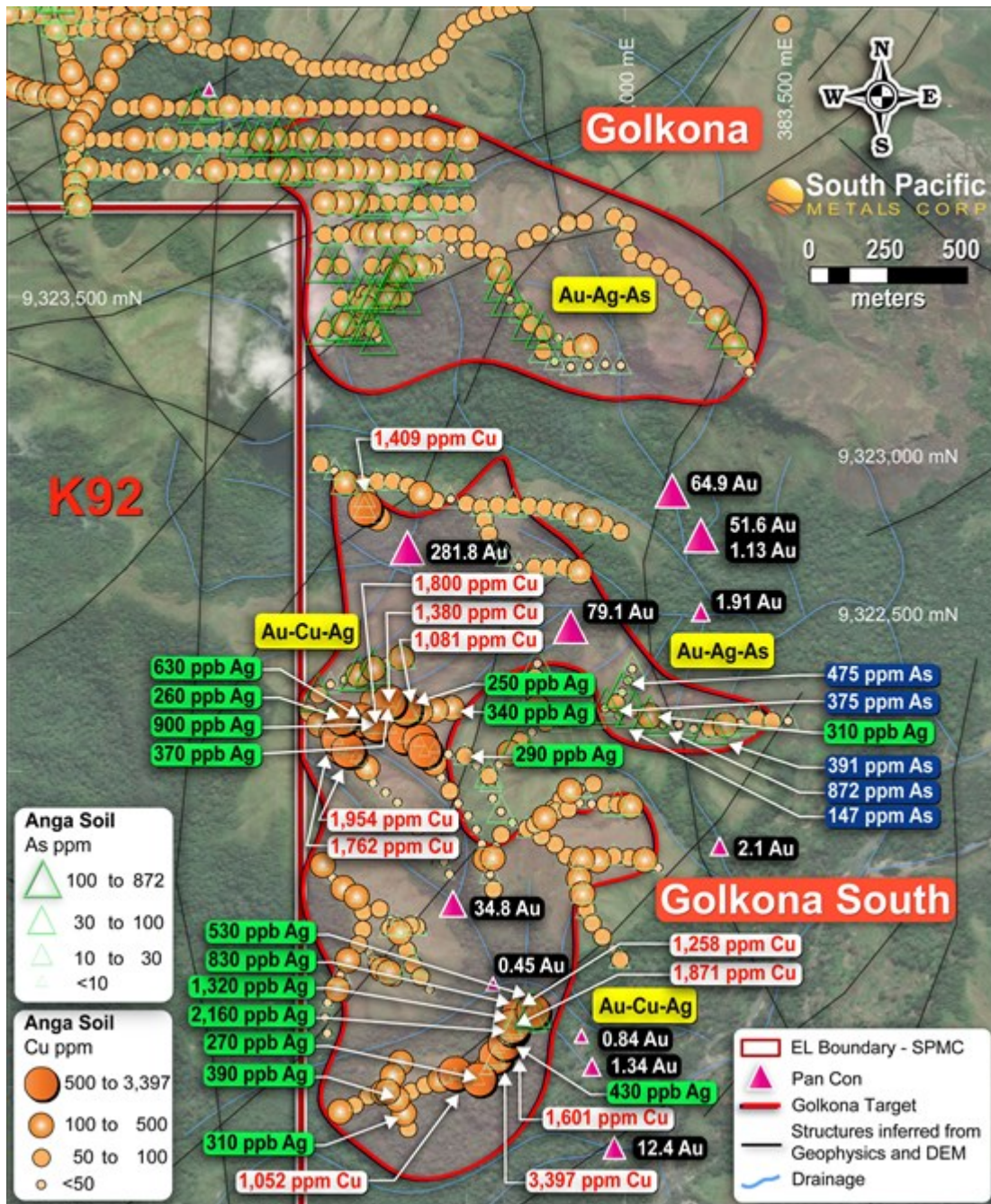
*"We are very pleased with these latest soil geochemical results at Golkona South,"* said Timo Jauristo, CEO of South Pacific Metals Corp. *"The potential of Golkona South and the Anga tenements are highlighted by these results and their location along the northeasterly trend from K92's large and growing Arakompa project. We look forward to continuing to advance this project, although our immediate priority is the imminent start of drilling to test the exciting epithermal vein targets at Ontenu NE."*



**Figure 1** Golkona to Golkona South target areas with gold in soil and stream sediment (pan concentrate) results.

To view an enhanced version of this graphic, please visit:

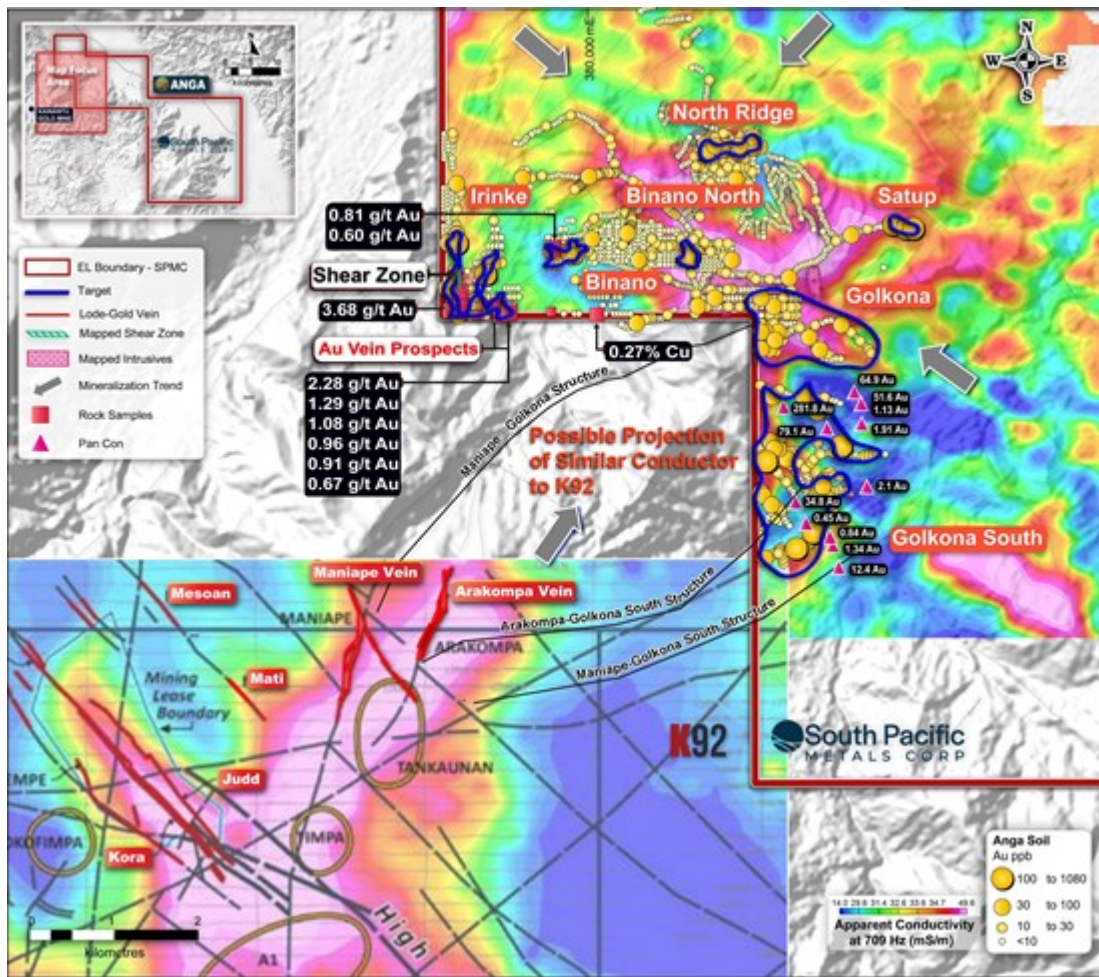
[https://images.newsfilecorp.com/files/10890/270302\\_fe721d2524fed935\\_001full.jpg](https://images.newsfilecorp.com/files/10890/270302_fe721d2524fed935_001full.jpg)



**Figure 2** Golkona to Golkona South target areas with Cu-As-Ag in soil and Au in stream sediment (pan concentrate) results.

To view an enhanced version of this graphic, please visit:

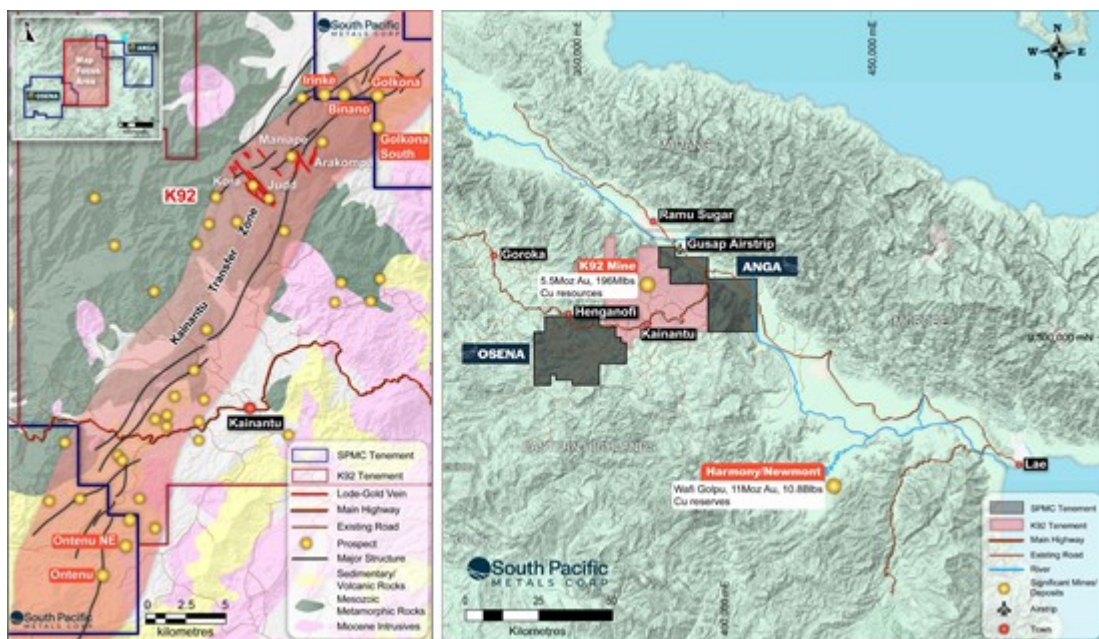
[https://images.newsfilecorp.com/files/10890/270302\\_fe721d2524fed935\\_002full.jpg](https://images.newsfilecorp.com/files/10890/270302_fe721d2524fed935_002full.jpg)



**Figure 3** Irinke, Golkona and Golkona South Areas in relation to K92's Arakoma deposit. The structures are inferred from public domain data include interpretation of Digital Elevation Models and geophysical data. Background image = Mobile MT, apparent conductivity including georeferenced image from public release by K92 Mining Ltd.

To view an enhanced version of this graphic, please visit:

[https://images.newsfilecorp.com/files/10890/270302\\_fe721d2524fed935\\_003full.jpg](https://images.newsfilecorp.com/files/10890/270302_fe721d2524fed935_003full.jpg)



**Figure 4** Regional location map in the Kainantu Transfer Zone and proximity to infrastructure, in eastern Papua New Guinea

To view an enhanced version of this graphic, please visit:

[https://images.newsfilecorp.com/files/10890/270302\\_south%20pacific%20figure%204.jpg](https://images.newsfilecorp.com/files/10890/270302_south%20pacific%20figure%204.jpg)

## **About South Pacific Metals Corp.**

South Pacific Metals Corp. is an emerging gold-copper exploration company operating in the heart of Papua New Guinea's proven gold and copper production corridors. With an expansive 3,100 km<sup>2</sup> land package and four transformative gold-copper projects contiguous with major producers K92 Mining, PanAust and neighbouring Barrick/Zijin, new leadership and experienced in-country teams are prioritizing thoughtful and rigorous technical programs focused on boots-on-the-ground exploration to prioritize discovery across its portfolio projects: Anga, Osená, Kili Teke, and May River.

Immediately flanking K92 Mining's active drilling and gold producing operations to the northeast and southwest, SPMC's Anga and Osená Projects are located within the high-grade Kainantu Gold District - each having the potential to host similar-style lode-gold and porphyry copper-gold mineralization as that present within K92 Mining's tenements. Kili Teke is an advanced exploration project situated only 40 km from the world-class Porgera Gold Mine and hosts an existing Inferred Mineral Resource with multiple opportunities for expansion and further discovery. The May River Project is located adjacent to the world-renowned Frieda River copper-gold project, with historical drilling indicating potential for a significant, untapped-gold mineralized system. SPMC common shares are listed on the TSX Venture Exchange (TSXV: SPMC), the OTCQB Marketplace (OTCQB: SPMEF) and Frankfurt Stock Exchange (FSE: 6J00).

## **Quality Assurance and Quality Control**

### *Soil Sampling*

Soil sampling involves augur or dig to the c-horizon and sieving to a <2 mm in the field. Soil samples were sent to the ITS (PNG) Ltd (Intertek) Laboratory in Lae for assay. Assaying for gold was conducted for gold using FA50, with pulps sent to Australia for aqua regia AR10 multi-element techniques. Certified Reference Material (CRM), duplicates and blanks are inserted in the soil sample to monitor laboratory performance, with no significant variations from expected results. Refer Table 1 in appendix for full results.

### *Stream sediment / pan concentrate*

Pan concentrate soil samples are collected from stream sediment trap sites above the confluence of individual streams. A field technician places approximately 2 to 4kg of wet sediment into a gold pan, and pans to concentrate between 50g and 100g of heavy minerals, which typically include magnetite and other iron oxides, sulphides and native metals including gold. By its nature, this form of sampling concentrates gold and can provide information to potential gold sources upstream. The Company considers >10ppm Au as indicative of a potential source and >100ppm Au as very encouraging. Further work is required, conducting reconnaissance in the stream catchment, to identify the source. Samples presented in this release were assayed at ITS (PNG) Ltd (Intertek) Laboratory in Lae, using fire assay / 50g charge (FA50). No CRMs were inserted, though the laboratory conducted its own standard checks.

**Refer Table 2 in appendix for full results.**

## **Qualified Person**

The scientific and technical information disclosed in this release has been compiled by Company geologists and reviewed and approved by Darren Holden, BSc. (Hons), Ph.D., FAusIMM, a "Qualified Person" as defined in National Instrument 43-101 *Standards of Disclosure for Mineral Projects*. Dr. Holden is a Technical Advisor to the Company.

For further information, please contact:

**Michael Murphy, Executive Chair**

or

Investor Relations  
South Pacific Metals Corp.  
Tel: +1-604-653-9464  
Email: [info@southpacificmetals.ca](mailto:info@southpacificmetals.ca)

**Neither the TSX Venture Exchange nor its Regulation Services Provider (as that term is defined in the policies of the TSX Venture Exchange) accepts responsibility for the adequacy or accuracy of this release.**

### ***Disclaimer and Forward-Looking Information***

*Statements contained in this release that are not historical facts are forward-looking statements that involve various risks and uncertainty affecting the business of SPMC. In making the forward-looking statements, SPMC has applied certain assumptions that are based on information available to the Company, including SPMC's strategic plan for the near and mid-term. There is no assurance that such information will prove to be accurate, as actual results and future events could differ materially from those anticipated in such statements. Forward-looking statements may involve various risks and uncertainties affecting the business of the Company. These forward-looking statements can generally be identified as such because of the context of the statements, including such words as "believes," "anticipates," "expects," "plans", "may", "estimates", or words of a similar nature. Forward-looking statements or information in this news release relate to, among other things: ongoing exploration and future exploration programs, including results therefrom and impact thereof. These forward-looking statements and information reflect the Company's current views with respect to future events and are necessarily based upon a number of assumptions that, while considered reasonable by the Company, are inherently subject to significant operational, business, economic, regulatory, or other unforeseen uncertainties and contingencies. These assumptions include, without limitation: success of the Company's projects, prices for metals remaining as estimated, currency exchange rates remaining as estimated, availability of funds for the Company's projects, capital, decommissioning and reclamation estimates, prices for energy inputs, labour, materials, supplies and services (including transportation), no labour-related disruptions, no unplanned delays or interruptions in scheduled exploration, all necessary permits, licenses and regulatory approvals are received in a timely manner, and the ability to comply with environmental, health and safety laws. The foregoing list of assumptions is not exhaustive. The Company cautions the reader that forward-looking statements and information involve known and unknown risks, uncertainties and other factors that may cause actual results and developments to differ materially from those expressed or implied by such forward-looking statements or information contained in this news release and the Company has made assumptions and estimates based on or related to many of these factors. Accordingly, readers should not place undue reliance on forward-looking information. Such factors include, without limitation: fluctuations in gold prices, fluctuations in prices for energy inputs, labour, materials, supplies and services (including transportation), fluctuations in currency markets (such as the Canadian dollar versus the U.S. dollar), operational risks and hazards inherent with the business of mineral exploration, inadequate insurance or inability to obtain insurance to cover these risks and hazards, the Company's ability to obtain all necessary permits, licenses and regulatory approvals in a timely manner, changes in laws, regulations and government practices, including environmental, export and import laws and regulations, legal restrictions relating to mineral exploration, increased competition in the mining industry for equipment and qualified personnel, the availability of additional capital, title matters and the additional risks identified in the Company's filings with Canadian securities regulators on SEDAR+ ([www.sedarplus.ca](http://www.sedarplus.ca)). Although the Company has attempted to identify important factors that could cause actual results to differ materially, there may be other factors that cause results not to be as anticipated, estimated, described, or intended. Investors are cautioned against undue reliance on forward-looking statements or information. These forward-looking statements are made as of the date hereof and, except as required under applicable securities legislation, the Company does not assume any obligation to update or revise them to reflect new events or circumstances. Mineralization*

hosted on adjacent and/or nearby properties is not necessarily indicative of mineralization hosted on the Company's property.

### Appendix 1: Results reported in this release.

**Table 1.** Golkona South soil samples >10ppb. Coordinates in WGS84 Zone 55 south. Ordered highest to lowest by Au.

Sample ID	Easting	Northing	Elevation	Gold (ppb)	Silver (ppb)	As (ppm)	Copper (ppm)
D04285	382991	9322253	586	1080	160	475	45
D03834	382107	9322074	788	139	190	4	1762
D03860	382661	9321232	524	114	1320	98	1258
D03854	382463	9321045	561	104	230	8	1052
D03857	382591	9321099	552	97	160	10	3397
D03752	382213	9322150	775	96	900	13	1800
D03858	382620	9321140	549	85	430	8	1601
D04293	382204	9322224	756	67	120	2	365
D04281	382124	9322066	779	60	160	1	1954
D04292	382254	9322220	742	58	370	5	1380
D03836	382075	9321667	729	58	25	2	34
D04278	382178	9322832	761	56	180	11	1409
D03733	382996	9323684	814	56	60	29	77
D03797	382615	9323538	850	53	60	148	80
D04221	382644	9321195	539	51	830	10	1871
D03817	382547	9322838	696	50	25	12	61
D03839	382172	9321559	695	48	25	3	55
D04256	382158	9322307	758	47	190	187	321
D03802	382743	9323390	822	45	320	515	65
D03864	382213	9323503	862	44	60	584	87
D04248	382714	9322648	575	40	25	13	67
D03754	382301	9322110	747	34	100	5	519
D03835	382045	9321706	744	34	130	2	499
D04216	382539	9321027	550	33	270	4	703
D03755	382351	9322097	725	33	220	7	629
D03768	382779	9321772	646	33	25	4	58
D04223	382709	9321241	498	31	530	484	659
D04220	382628	9321159	546	30	190	5	346
D03849	382099	9320926	593	30	170	6	169
D04222	382680	9321214	521	29	830	18	321
D04263	382798	9321914	638	29	25	5	80
D04297	382188	9323404	866	29	150	254	48
D03859	382643	9321185	544	28	2160	15	532
D03766	382865	9321725	626	28	70	10	128
D04261	382747	9321854	665	27	25	4	209
D03790	383268	9322140	603	27	25	391	78
D03862	382111	9323416	818	26	25	162	108
D03751	382166	9322163	792	25	630	11	793
D03777	382668	9322099	655	25	50	131	97
D03844	382302	9320920	574	24	310	7	202
D04308	382715	9322300	600	23	90	15	70
D03845	382280	9320965	584	22	390	7	168
D03855	382513	9321042	565	22	70	7	158
D04280	382092	9322103	788	21	80	5	605

Sample ID	Easting	Northing	Elevation	Gold (ppb)	Silver (ppb)	As (ppm)	Copper (ppm)
D03748	382074	9322125	819	21	60	5	423
D04218	382587	9321090	548	21	140	12	149
D03865	382257	9323528	867	21	25	109	99
D03801	382702	9323418	833	21	110	152	89
D04260	382715	9321834	668	21	25	7	82
D04291	382304	9322199	724	20	250	81	1081
D04295	382106	9322169	795	20	260	2	804
D04288	382453	9322201	661	20	340	27	417
D04233	382396	9322027	688	20	60	1	110
D03861	382708	9321214	515	20	60	85	90
D03819	382647	9322842	649	20	70	71	70
D03866	382278	9323572	870	19	70	301	134
D03846	382235	9320987	590	19	180	5	121
D03776	382636	9322060	662	19	140	21	113
D03782	382896	9322177	623	19	25	39	49
D04259	382294	9322361	705	18	200	72	257
D03808	382116	9322915	797	18	80	49	177
D04265	382862	9321947	602	18	50	16	44
D04232	382366	9322066	707	17	130	2	712
D04290	382353	9322191	709	17	130	8	255
D03762	383063	9321722	556	17	90	21	197
D03786	383078	9322177	591	17	310	872	109
D04226	382265	9321039	557	17	130	5	102
D03732	383008	9323732	826	17	60	3	81
D04298	382153	9323445	895	17	25	93	80
D03798	382637	9323493	848	17	80	100	41
D03747	382033	9322151	838	16	60	2	468
D03769	382735	9321796	661	16	25	3	97
D03758	382493	9322051	691	16	290	28	81
D03842	382288	9321493	644	15	150	7	140
D03863	382180	9323466	846	15	25	92	135
D03856	382560	9321060	567	15	140	5	122
D04228	382250	9320989	582	15	100	6	102
D03765	382915	9321720	607	15	25	4	100
D03847	382187	9320975	586	15	130	7	75
D03760	382569	9321988	682	15	70	35	64
D04296	382221	9323372	838	15	120	210	49
D04270	382895	9321900	594	15	70	7	49
D03841	382260	9321534	663	15	25	6	27
D03853	382415	9321026	570	14	200	4	192
D04289	382403	9322195	688	14	170	5	160
D03749	382118	9322152	811	14	70	1	114
D04231	382495	9321037	548	14	130	2	112
D03764	382964	9321734	583	14	80	22	91
D03867	382325	9323591	859	14	80	95	91
D03739	383216	9323495	732	14	60	3	90
D03816	382499	9322848	708	14	25	8	74
D03770	382691	9321821	668	14	25	21	67
D03792	383368	9322155	567	14	70	74	44
D03783	382938	9322203	619	14	25	375	37

Sample ID	Easting	Northing	Elevation	Gold (ppb)	Silver (ppb)	As (ppm)	Copper (ppm)
D03830	382244	9321936	720	14	25	3	19
D03796	382602	9323586	862	13	25	30	120
D04264	382826	9321940	622	13	70	4	112
D04299	382175	9323513	885	13	25	208	96
D03793	383415	9322168	550	13	60	61	73
D04272	382977	9321897	651	13	60	50	61
D04257	382205	9322327	740	12	160	146	140
D04215	382985	9321407	464	12	25	14	95
D03852	382368	9321009	578	12	120	3	93
D03822	382795	9322827	597	12	25	14	82
D03871	382502	9323651	867	12	50	5	80
D03746	382000	9322188	854	12	25	2	63
D04268	382820	9321883	633	12	25	6	57
D03832	382185	9322012	750	11	100	3	483
D03818	382597	9322844	676	11	25	17	96
D03742	383320	9323391	694	11	100	102	85
D03806	382037	9322975	819	11	60	26	74
D04244	382570	9322753	649	11	25	6	74
D04262	382774	9321884	652	11	25	5	72
D03843	382314	9320872	557	11	150	6	68
D04245	382591	9322710	638	11	60	9	60
D03804	382826	9323340	782	11	25	32	52
D04230	382465	9321044	546	10	110	2	122
D03743	383347	9323350	690	10	110	52	110
D03791	383318	9322148	585	10	50	88	101
D04209	382855	9321662	618	10	25	27	101
D04227	382256	9321015	570	10	150	4	97
D03725	382685	9323683	861	10	70	2	89
D03767	382815	9321736	636	10	130	4	88
D03736	383107	9323598	779	10	110	7	85
D04195	382217	9321393	626	10	90	3	83
D03827	382345	9321828	639	10	25	3	82
D03811	382266	9322920	765	10	25	16	69
D03779	382748	9322157	646	10	25	2	68
D04267	382782	9321876	647	10	25	4	66
D04253	382030	9322245	835	10	50	143	64
D03799	382676	9323460	845	10	50	48	53
D04246	382626	9322680	621	10	70	10	47
D04255	382114	9322292	777	10	120	24	41
D03785	383031	9322191	600	10	25	147	36

**Table 2.** Golkona South stream sediment results. Coordinates in WGS84 Zone 55 south. Ordered highest to lowest by Au

Sample ID	Sample Type	Easting	Northing	Elevation	Au (ppm)
D04712	Pan Concentrate	382312	9322698	601	281.8
D04711	Pan Concentrate	382828	9322449	439	79.1
D04706	Pan Concentrate	383149	9322878	493	64.9
D04707	Pan Concentrate	383239	9322737	464	51.6
D04703	Pan Concentrate	382457	9321576	594	34.8

---

D04702	Pan Concentrate	382967	9320807	447	12.4
D04705	Pan Concentrate	383298	9321760	585	2.1
D04710	Pan Concentrate	383239	9322501	464	1.91
D04709	Pan Concentrate	382895	9321063	459	1.34
D04708	Pan Concentrate	383231	9322737	470	1.13
D04701	Pan Concentrate	382862	9321163	460	0.837
D04704	Pan Concentrate	382582	9321326	595	0.447



To view the source version of this press release, please visit  
<https://www.newsfilecorp.com/release/270302>