



## AMERICAL LITHIUM MINERALS, INC.

OTC Pink Supplemental Disclosure – Current Reporting of Material Corporate Events

### **OTHER EVENTS THE ISSUER CONSIDERS TO BE OF IMPORTANCE**

#### **Assay Results – Sarcobatus Playa Lithium Property**

American Lithium Minerals, Inc. (“AMLM” or the “Company”) has received assay results from hand auger sampling of the original 54 placer mining claims (1,080 acres) at Sarcobatus Playa. 30 samples were collected on May 15, 16 and 21, 2022 by a crew under the direction of the AMLM geochemistry manager. The samples were collected with a hand auger at depths of 40 to 48 inches (102-122 centimeters). The sample grid was laid out at claim corners, so that each and every one of the 54 original mining claims was sampled. The samples were sent by Fedex to ALS in Reno, Nevada, which utilized an ultra trace aqua regia ICP-MS analytical procedure.

**Lithium content of the 30 samples from the original 54 claims ranged from 229 ppm to 580 ppm and averaged 420 ppm Lithium.** The samples were also analyzed for Boron, ranging from 70 ppm to 580 ppm Boron with an average of 216 ppm Boron.

The AMLM sampling program was planned to confirm the reported findings of work done in 2016 by Rainmaker Resources. Rainmaker collected 19 hand auger samples at a similar depth, reporting lithium content of 140 ppm to 300 ppm, with an average of 233 ppm. AMLM sampled at each of the 19 locations previously sampled by Rainmaker. An additional 11 infill locations were sampled by AMLM to insure that “discovery” requirements under Nevada mining law were met for each and every one of AMLM’s 54 original claims. The Company does not yet know why its results are so much higher than Rainmaker’s.

AMLM subsequently located an additional 19 placer mining claims (380 acres) to the west of the 54 original claims. These claims are adjacent to the playa and include the access road to the property. The Company has received assay results from the western claim block. These ranged from 188 ppm to 510 ppm lithium, with an average of 307 ppm lithium. While all samples exceed 100 ppm lithium and were strongly anomalous, they were not as high in lithium as the samples taken from the original 54 claims which are underlain by the playa.

The AMLM Sarcobatus Playa lithium property is located at Scotty’s Junction in Nye County, Nevada, approximately 40 miles northwest of Beatty. It is about 20 miles southeast of the AMLM Stonewall Flat lithium property. AMLM’s Sarcobatus Playa property is immediately west of Iconic Mineral’s “Bonnie Claire” lithium property.

#### **Exhibits**

Exhibit	Document	Location
A	Map of Sample Locations	Filed Herewith
B	Table of Assay Results – Original 54 claims	Filed Herewith
C	Table of Assay Results – Western claim block (19 claims)	Filed Herewith

**Dated: Las Vegas, Nevada  
September 12, 2022**

**/s/ Barbara McIntyre Bauman  
Barbara McIntyre Bauman, President**

**Cautionary Language Concerning Forward-Looking Statements:**

This filing release contains forward-looking statements. The words or phrases "would be," "will allow," "intends to," "will likely result," "are expected to," "will continue," "is anticipated," "estimate," "project," or similar expressions are intended to identify "forward-looking statements." Actual results could differ materially from those projected by AMLM. The forward-looking statements should not be construed as an indication in any way whatsoever of the future value of the AMLM. common stock or its present or future financial condition. Statements made herein are as of the date of this filing and should not be relied upon as of any subsequent date. AMLM. cautions readers not to place reliance on such statements. Unless otherwise required by applicable law, AMLM. does not undertake, and AMLM. specifically disclaims any obligation, to update any forward-looking statements to reflect occurrences, developments, unanticipated events or circumstances after the date of such statement.

## EXHIBIT A

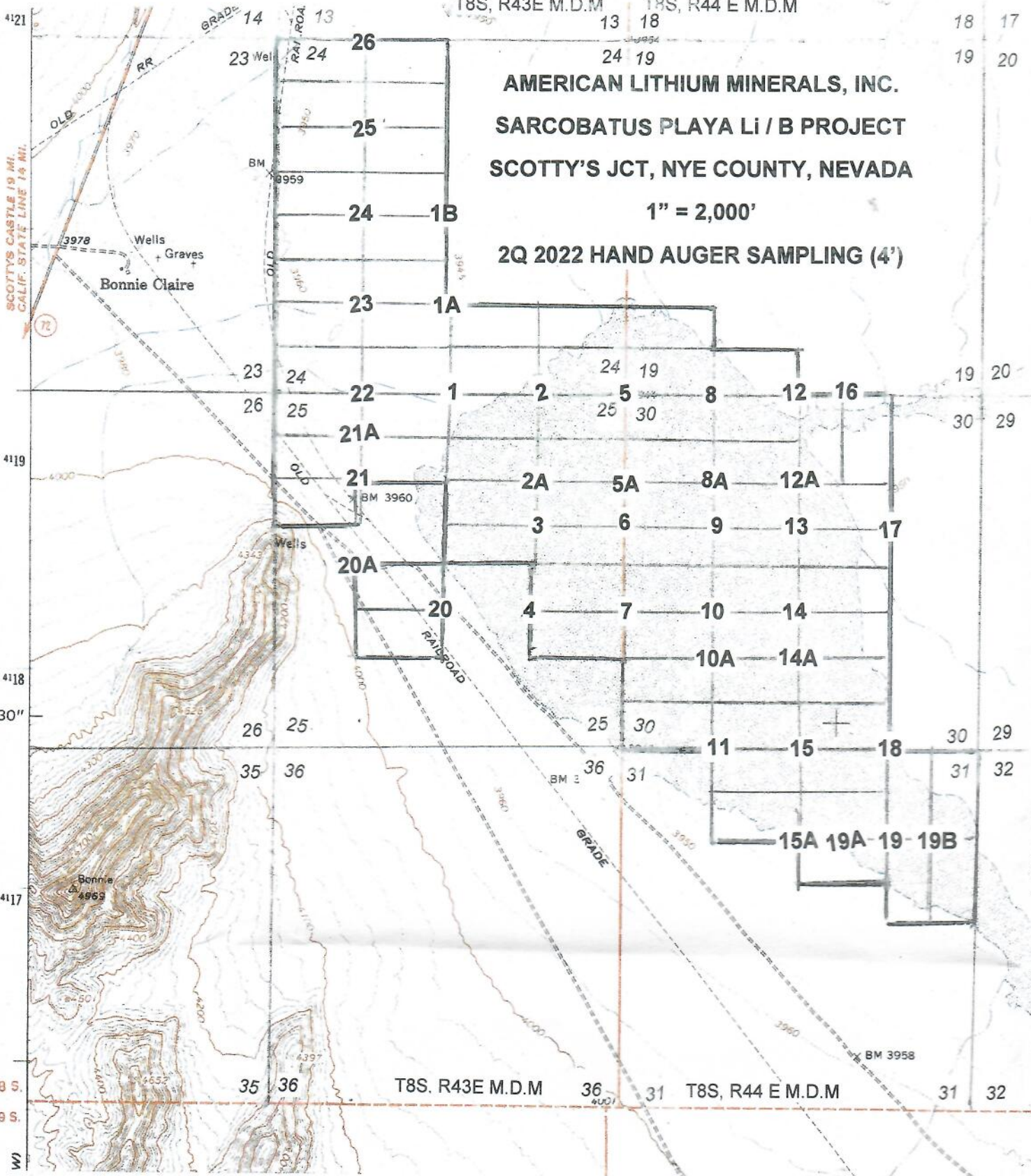
T8S, R43E M.D.M T8S, R44 E M.D.M

18 17  
19 20

**AMERICAN LITHIUM MINERALS, INC.  
SARCOBATUS PLAYA LI / B PROJECT  
SCOTTY'S JCT, NYE COUNTY, NEVADA**

1" = 2,000'

2Q 2022 HAND AUGER SAMPLING (4')



ICONIC MINERALS LITHIUM PROPERTY

**EXHIBIT B**

**AMERICAN LITHIUM MINERALS, INC.**  
**SARCOBATUS PLAYA PROJECT**  
**TABLE OF ASSAY RESULTS**  
**Hand Auger Samples Collected May 15, 16 and 21, 2022**

**ORIGINAL CLAIM BLOCK (54 CLAIMS)**

<b>Sample No.</b>	<b>LITHIUM</b>		<b>BORON</b>	
	<b>AMLM (2022) Li (ppm)</b>	<b>Rainmaker (2016) Li (ppm)</b>	<b>AMLM (2022) B (ppm)</b>	<b>Rainmaker (2016) B (ppm)</b>
1	317	210	90	58
1A	550	-	130	-
1B	290	-	70	-
2	520	250	100	67
2A	470	-	110	-
3	470	200	110	57
4	429	240	110	56
5	365	260	90	78
5A	470	-	110	-
6	440	260	120	120
7	580	200	140	160
8	370	300	160	75
8A	550	-	170	-
9	530	250	180	150
10	500	290	140	100
10A	320	-	80	-
11	510	200	140	360
12	261	140	80	460
12A	232	-	220	-
13	358	210	530	280

<b>Sample No.</b>	<b>LITHIUM</b>		<b>BORON</b>	
	<b>AMLMLM (2022) Li (ppm)</b>	<b>Rainmaker (2016) Li (ppm)</b>	<b>AMLMLM (2022) B (ppm)</b>	<b>Rainmaker (2016) B (ppm)</b>
14	440	280	240	110
14A	419	-	380	-
15	490	290	220	110
15A	520	-	130	-
16	229	210	80	830
17	284	230	470	200
18	399	180	580	200
19	409	220	530	190
19A	440	-	460	-
19B	440	-	520	-
<b>Average</b>	<b>420 ppm Li</b>	<b>233</b>	<b>216 ppm B</b>	<b>193</b>

## EXHIBIT C

**AMERICAN LITHIUM MINERALS, INC.**  
**SARCOBATUS PLAYA PROJECT**  
**TABLE OF ASSAY RESULTS**  
**Hand Auger Samples Collected June 18, 2022**

**WESTERN CLAIM BLOCK (19 CLAIMS)**

<b>Sample No.</b>	<b>LITHIUM</b>		<b>BORON</b>	
	<b>AMLM (2022) Li (ppm)</b>	<b>Rainmaker (2016) Li (ppm)</b>	<b>AMLM (2022) B (ppm)</b>	<b>Rainmaker (2016) B (ppm)</b>
20	510	-	100	-
20A	228	-	40	-
21	188	-	50	-
21A	362	-	70	-
22	344	-	70	-
23	302	-	70	-
24	300	-	90	-
25	260	-	80	-
26	265	-	50	-
<b>Average</b>	<b>307 ppm Li</b>	<b>-</b>	<b>69 ppm B</b>	<b>-</b>