

SOHM INC.

FINANCIAL REPORT

FOR THE YAER ENDED

March 31, 2015

TABLE OF CONTENTS

	PAGE
COVER SHEET	F-1
TABLE OF CONTENTS	F-2
BALANCE SHEET, ASSETS	F-4
BALANCE SHEET, LIABILITIES AND STOCKHOLDERS' EQUITY.....	F-5
INCOME STATEMENT / STATEMENT OF OPERATIONS.....	F-6
STATEMENT OF STOCKHOLDERS' EQUITY	F-7
STATEMENT OF CASH FLOWS	F-8
NOTES TO FINANCIAL STATEMENTS	F-9-16

**SOHM INC.
FINANCIAL REPORT
FOR THE YAER ENDED
March 31, 2015**

Item 1: Exact name of the issuer and the address of its principal executive offices.

Name of the Isser: SOHM, Inc.

Principal Executive offices: 15942 Los Serranos Country Club Dr. Ste. D-343,
Chino Hills, CA 91709 USA

Telephone: (714) 522-6700
Facsimile: (714) 523-4329
Web site: www.sohm.com

Investor Relations's Officer: N/A

Investor Relations's Office: SOHM Inc.
15942 Los Serranos Country Club Dr. Ste. D-343
Chino Hills, CA 91709 USA

Investor Relations's Telephone: 714-522-6700
Investor Relations's Fax: 714-523-4329
Investor Relations's Email: IR@sohm.com

Item 2 Shares outstanding.

The following table sets forth information concerning the equity securities of SOHM, Inc. as of June 30, 2014:

SECURITIES AUTHORIZED AND OUTSTANDING Class	As of	Number of Shares Authorized	Number of Shares Outstanding	Freely Tradable Shares (public float)	Total Number of Beneficial Shareholders (1)	Total Number of Shareholders of Record
Common	March 31 2015	2,000,000,000	1,098,649,738	691,057,826	662	662
Preferred	March 31, 2015	100	51	None	1	1

SOHM, INC.
YEARLY REPORT
FOR THE QUARTER ENDED March 31, 2015
BALANCE SHEET
As of March 31, 2015 and December 31, 2014
(Unaudited)

SOHM, INC.			
QUARTERLY REPORT FOR THE QUARTER ENDED March 31, 2015			
BALANCE SHEET			
As of March 31, 2015(Unaudited)			
ASSETS		Consolidated 1st qtr 2015	As of Dec 31 2014
CURRENT ASSETS			
Cash		5,949	7,655
Trade Receivables		560,362	571,721
Loans and Advances		20,733	335,029
Inventory		599,184	675,614
Total Current Assets		1,186,228	1,590,019
EQUIPMENT, net		1,375,865	1,405,013
OTHER ASSETS			
Note	Subscribed Shares	508,381	508,381
	Prepaid Expenses	-	-
	Reserves and Surplus		946,180
Total Other Assets		508,381	-
TOTAL ASSETS		4,337,579	4,449,593

SOHM, INC.
BALANCE SHEET
As of March 31, 2015 and December 31, 2014
(Unaudited)

SOHM, INC. QUARTERLY REPORT FOR THE QUARTER ENDED MARCH 31, 2015 BALANCE SHEET As of March 31, 2015 (Unaudited)			
LIABILITIES AND STOCKHOLDERS' EQUITY	Consolidated 1st qtr 2015	As of Dec 31 2014	
CURRENT LIABILITIES			
Payables	1,089,152	1,085,645	
Loan Payable and other current liabilities	-	360,221	
Accrued Tax & Payroll liabilities	131,059	61,604	
Total Current Liabilities	1,220,211	1,507,470	
LONG TERM NOTES PAYABLE	1,123,783	1,123,783	
LOAN PAYABLE TO BANK & OTHERS	2,661,473	2,319,157	
Total Liabilities	5,005,467	4,950,410	
STOCKHOLDERS' EQUITY			
Common Stock, authorized 1,000,000,000 shares of stock, 559922379 issued and outstanding at March 31 2014 and 1098646738 issued and outstanding at March 31, 2015 par value \$0.001 per share and Preferred Stock authorized 100 share of stock and 51 issued and outstanding at March 31 2015 par value \$0.001 per share	3,798,426	3,798,426	
Additional Paid in Capital	-	-	
Subscribed Shares	818,445	812,722	
Retained Earnings (Loss)	(1,486,333)	(1,313,539)	
Total Stockholders' Equity	4,337,579	(500,817)	
TOTAL LIABILITIES AND STOCKHOLDERS' EQUITY	4,337,579	4,449,593	

SOHM, INC.
STATEMENT OF OPERATIONS / Income Statement
As of March 31, 2015 and December 31, 2014
(Unaudited)

Particulars	Consolidated 1st qtr 2015	As of Dec 31 2014
INCOME		
Revenue	84,351	788,450
Total Revenue	84,351	788,450
COST OF SALES		
Cost of Goods Sold	80,649	522,049
Total Cost of Sales	80,649	522,049
Gross Profit	3,702	266,401
EXPENSES		
Sales and Marketing	5,783	127,934
General and Administrative	64,979	603,265
Research and Development	-	-
Depreciation Expense	45,534	188,202
Interest Expense	60,200	230,812
Total Expense	176,496	1,150,278
Net Income before extraordinary		1,150,278
Items	(172,794)	
Extraordinary Items	-	-
Loss before Provision for	-	-
Income Taxes	-	-
Provision for Income Taxes	-	-
NET INCOME (LOSS)	(172,794)	(883,897)
Basic and Diluted Earnings		
Earnings (Loss) per Common		
Share	-	0
Basic and Diluted Weighted Average		
Number of Common Shares	1,098,646,738	559,922,379

SOHM, INC.
STATEMENT OF STOCKHOLDERS' EQUITY
As of March 31, 2015 and December 31, 2014
(Unaudited)

	Common Stock Shares	Common Stock Amount	Additional Paid in Capital	Stock Subscribed	Accumulated Deficit	Total Equity
Balance, December 31, 2004	-	-	4,200		(8,125)	(3,925)
Sales of Common Stock	260,000	260	12,740			13,000
Common Stock Issued for Conversion of LLC Interest	4,000,000	4,000	(4,200)			(200)
Common Stock Issued for Services Rendered	14,000,000	14,000	-			14,000
Deficit for year to date					(308,429)	(308,429)
Balance, December 31, 2005	18,260,000	18,260	12,740	0	(316,554)	(285,554)
Common Stock Issued for Special Interest	550,000	550	7,700			8,250
Common Stock Issued for Services Rendered	85,500,000	85,500	1,197,000			1,282,500
Common Stock Issued for Subscriber Shares Note	10,000,000			150,000		150,000
Deficit for year to date					(1,456,410)	(1,456,410)
Balance, December 31, 2006	114,310,000	104,310	1,217,440	150,000	(1,772,964)	(301,214)
Balance September 30, 2009	122,361,405	380,512	0	0	(757,645)	(377,133)
Balance December 31, 2009	237,125,016	890,972	0	0	(1,103,122)	(212,150)
Balance March 31, 2010	265,736,126	1,540,055	0	0	(1,711,599)	(171,544)
Balance June 30, 2010	271,343,626	1,575,982	0	0	(1,715,500)	(139,518)
Balance September 30 2010	283,168,626	1,750,590	0	0	(1,896,462)	(145,872)
Balance December 31 2010	329,107,088	2,059,946	0	0	(2,083,579)	(23,633)
Balance March 31 2011	333,107,088	2,059,946	0	0	(2,244,598)	(184,652)
Balance June 20, 2011	368,323,806	2,359,946	0	0	(2,522,128)	(164,182)
Balance Sept 30 2011	431,828,755	3,074,946	0	0	(2,580,349)	494,597
Balance December 31 2011	432,278,806	3,074,946	0	0	(2,632,569)	442,377
Balance December 31 2012	496,063,353	3,249,196	0	0	(3,953,145)	(703,949)
Balance December 31 2013	496,063,404	3,249,196	0	0	(4,977,426)	(703,949)
Balance March 31, 2014	534,230,020	534,230	0	0	(5,009,898)	(1,226,472)
Balance June 30, 2014	549,230,020	15,000	0	0		
Balance September 30, 2014	559,922,379					

SOHM, INC.
STATEMENT OF CASH FLOWS
As of March 31, 2015 and December 31, 2014
(Unaudited)

Particulars	Total As of March 2015	As of Dec 31 2014
Cash Flows from		
Operating Activities		
Net Income (Loss)	(172,794)	(370,603)
Adjustment to Retained Earnings	-	-
Accounts Receivable	11,359	2,078
Inventory	76,430	(256,232)
Loans and Advances	314,296	(111,324)
Accounts Payable	3,507	182,618
Loans Payable	342,316	(84,994)
Accrued Payroll liabilities	69,455	(176,056)
Current Liabilities-others	(360,221)	360,221
Depreciation Expense	45,534	45,001
Amortization Expense	-	-
Stock Issued for services	-	-
Stock Issued for special interest	-	-
Stock issued for capital	-	-
Net Cash Provided by Operations	329,882	(409,291)
Cash Flows Used in Investing Activities		
Fixed Asset Purchase (Sale)	(16,386)	230,269
Other Assets	-	508,381
Net Cash Used for Investing	(16,386)	738,650
Cash Flows from Financing		
Notes Payable	-	-
Sales of Stock	-	-
Capital Contributions	-	-
Subscribed Shares Note	-	(549,230)
Special Interest	-	-
Cash Flows from Financing	-	(549,230)
Net Increase (Decrease) in Cash	313,496	(219,871)
Cash, Beginning of Period	(209,121)	10,750
Cash, End of Period	104,375	(209,121)

SOHM, INC.

NOTES TO FINANCIAL STATEMENTS

March 31, 2015 and December 31, 2014

NOTE 1. OVERVIEW OF OPERATIONS AND ACCOUNTING POLICIES

SOHM, Inc. is a generic pharmaceutical manufacturer that produces and markets generic drugs covering all major treatment categories. Global headquarters is located in North America with manufacturing sites in India. Generic pharmaceuticals are exported globally with a focus on distribution in emerging markets in Africa, Latin America, and Southeast Asia.

The Company's operations to date have included assembling its management, marketing and sales personnel, forming strategic relationships with vendors, securing financing and launching the initial purchases of tax lien certificates.

The accompanying financial statements include financial data such as assets, liabilities, profit and loss etc. of Sohm India Pvt. Ltd. India (100% stocks of Sohm India Pvt. Ltd. Have been held by the Company and its Directors)

The accompanying financial statements have been prepared assuming that the Company will continue as a going concern. As reflected in the accompanying financial statements, the Company had negative cash flow from operations and incurred a net loss during the previous twenty-two months. The financial statements do not include any adjustments relating to the recoverability and classification of recorded asset amounts or the amounts and classification of liabilities that might be necessary should the Company be unable to achieve sufficient cash flow from operations or secure adequate future financing and be therefore unable to continue as a going concern.

In the opinion of management, the accompanying balance sheets and related statements of income, cash flows, and stockholders' equity include all adjustments necessary for their fair presentation in conformity with U.S. generally accepted accounting principles. Preparing financial statements requires management to make estimates and assumptions that affect the reported amounts of assets, liabilities, revenue, and expenses. Actual results may differ from these estimates. The information included in this Form 211-75c should be read in conjunction with Management's Discussion and Analysis and financial statements and notes thereto included. Certain reclassifications have been made for consistent presentation.

F-9

Revenue Recognition

The Company generally recognizes revenue upon the accrual of interest earned on the tax lien certificates owned, as well as liquidating revenue from properties sold that the Company received through settlement of unredeemed tax lien certificates.

Deferred Revenue

The deferred revenue shown in the balance sheet is the interest earned but not collected.

Product Research and Development

F-10

Advertising, Sales & marketing

Advertising, sales & marketing costs are expensed as incurred. Advertising, sales & marketing expense totaled \$191,137 for the year-ended December 31, 2012 and for the year ended December 31, 2013 totaled \$179,003.

The company implemented new distribution of product policy, where in super distributor have been replaced by CSA & CFA for effective and regulated sales.

Inventory

Inventory is stated at the lower of cost or net realizable value. The method used for inventory is first-in first out. Inventory consists of Pharmaceutical products

Property, Equipment and Patents

Equipment is depreciated using the federal tax method over the estimated useful lives, which range from two to seven years.

Fixed assets consist of the following:

	09/30/14	12/31/14
Fixed Assets	1,645,953	<u>1,599,697</u>
Total fixed assets	1,645,953	<u>1,599,697</u>
Less: Accumulated depreciation and Amortization	<u>(46,256)</u>	<u>(45,201)</u>
Net	1,645,953	1,554,496

Use of Estimates

The preparation of financial statements in conformity with generally accepted accounting principles requires management to make estimates and assumptions that affect the reported amounts of assets and liabilities and disclosure of contingent assets and liabilities at the date of the financial statements and the reported amounts of revenue and expenses during the reporting period. Actual results could differ from those estimates.

F-11

Earnings per Share

The basic earnings (loss) per share is calculated by dividing the Company's net income available to common shareholders by the weighted average number of common shares during the year. The diluted earnings (loss) per share is calculated by dividing the Company's net income (loss) available to common shareholders by the diluted weighted average number of shares outstanding during the year. The diluted weighted average number of shares outstanding is the basic

weighted number of shares adjusted as of the first of the year for any potentially dilutive debt or equity.

The Company has no potentially dilutive securities outstanding at the end of the statement periods. Therefore, the basic and diluted earnings (loss) per share are presented on the face of the statement of operations as the same number.

Stock Based Compensation

The Company accounts for its stock based compensation based upon provisions in SFAS No. 123, Accounting for Stock-Based Compensation. In this statement stock based compensation is divided into two general categories, based upon who the stock receiver is, namely, employees/directors and non-employees/directors. The employees/directors category is further divided based upon the particular stock issuance plan, namely compensatory and non-compensatory. Each of these divisions treats the stock issuance for accounting purposes in a specific manner. The employee/directors non-compensatory securities are recorded when the stock is sold at the sales price. The compensatory stock may be recorded in one of two different methods. Compensation is calculated and recorded either at the securities' fair value or intrinsic value. The Company has selected to utilize the fair value method for valuing and recording options.

Note 2. NOTES PAYABLE AND CAPITAL LEASE OBLIGATIONS:

Notes payable and capital lease obligations consist of the following:

There are long term notes payable and the long –term portion.

	For Year Ended	
	09/30/2014	12/31/2014
Total Long Term Notes	1,123,783	1,123,783
Total Loan Payable to Bank & Others	2,354,425	2,319,157

F-12

Note 3. STOCKHOLDERS' EQUITY

Authorized Capital Stock

The Company has total authorized capital of 2,000,000,000 shares consisting of 2,000,000,000 shares of common stock, \$.001 par value per share and 100 preferred stock as of the date of the financial statements. Of the 2,000,000,000 shares authorized 1,098,646,738 shares were issued and outstanding as of March 31, 2015 and 559,922,379 shares were issued and outstanding on December 31, 2014 and of the 100 Preferred Shares authorized 51 shares were issued and outstanding as on March 31, 2015.

Stock Based Compensation Paid for Services of Non Employees

SFAS 123 provides that stock compensation paid to non employees be recorded with a value which is based upon the fair value of the services rendered or the stock given, whichever is more reliable. The common stock paid to non-employees was valued at the value of the stock issued. Below is a schedule which shows the common stock issued and the value of the services rendered for each of the period.

Year Ended	Shares Issued	Value
June 30,2014	15,000,000	\$0.001
March 31, 2014	534,230,020	\$0.001
December 31, 2013	0	\$0
December 31, 2012	0	\$0

Note 4.INCOME TAXES:

The Company provides for income taxes under Statement of Financial Accounting Standards No. 109, *Accounting for Income Taxes*. SFAS No. 109 requires the use of an asset and liability approach in accounting for income taxes. Deferred tax assets and liabilities are recorded based on the differences between the financial statement and tax bases of assets and liabilities and the tax rates in effect when these differences are expected to reverse.

SFAS No. 109 requires the reduction of deferred tax assets by a valuation allowance if, based on the weight of available evidence, it is more likely than not that some or all of the deferred tax assets will not be realized. In the Company's opinion, it is uncertain whether they will generate sufficient taxable income in the future to fully utilize the net deferred tax asset. Accordingly, a valuation allowance equal to the deferred tax asset has been recorded. The total deferred tax asset is \$450,300 which is calculated by multiplying the minimum federal corporate income tax rates by the respective NOL carryforwards, (15%). The total valuation allowance is a comparable \$ 450,300.

The total deferred tax asset is \$450,300 which is calculated by multiplying the minimum federal corporate income tax rates by the respective NOL carry forwards, (15%). The total valuation allowance is a comparable \$450,300.

The provision for income taxes is comprised of the net change in deferred taxes less the valuation account plus the current taxes payable as shown in the chart below.

	03/31/2015	12/31/2014
Net change in deferred taxes plus valuation	0	0
Current taxes payable	<u>0</u>	<u>0</u>
Provision for Income Taxes	<u>0</u>	<u>0</u>

F-13

Below is a chart showing the federal net operating losses and the years in which they will expire.

Year	Amount	Expiration
2004	0	2024
2005	136,737	2025
2006	173,910	2026
2007	185,000	2027
2008	-	-
2009	567,232	2029
2010	980,457	2030
2011	548,990	2031
2012	1,131,326	2032
2013	1,404,786	2033
Total NOL	5,128,438	

Note 5. LEASES AND OTHER COMMITMENTS:

The following is a listing of the operating leases that the Company had as of the period end and the monthly charges associated with those leases. The office lease is a renewable lease with option to renew for the next two years starting on and ending each year on, for which a new option agreement to be signed 90 days in advance of expiration date, with a 5% increase or decrease based upon the fair market value determined by the increase or decrease in the prime rate. The office equipment is a fixed cost lease with staggered expiration dates two years from the date of agreement. The lease terms provide for a one dollar buyout option at the end of the lease for which management intends on exercising, such as making the lease a capital lease. The Capital lease is depreciated over the useful life of years

	03/31/2015	12/31/14
Office rent	6,600	8,972
Office Equipment	8,565	15440.83
Total Monthly	15,165	24,412.83

The monthly operating leases as of 09/30/14 projected into the future for five years shows the following commitments:

	Year 1	Year 2	Year 3	Year 4	Year 5
Office Equipment	0	0	0	0	0
Real Estate	0	0	0	0	0
Total Yearly Leases	0	0	0	0	0

Note 6:GOING CONCERN

Listed below are some of the challenges which the Company is facing, and why these raise a question as to the Company's ability to continue as a going concern. Afterward, the explanation of the going concern problems, management's plans to turn the Company around are described.
Company's Challenges

The Company has survived only by raising funds. The Company must continue to raise funds in the near future to survive. Management has been successful in the past in raising these funds. There is no assurance that management can continue to find investors to cover the losses generated.

The need to provide working capital adequacy, is major challenge. For sustainable expansions of manufacturing competencies, increased stringency of regulatory framework and need for expanded management bandwidth to capture opportunities through innovation. The capacities and soft skill reinforce each other in face of outstanding opportunities. One of the major hurdle that is faced today is when large scale chain of store evaluates the products and innovation, it demand scale of response. The capacity build up requires sustained adequacy on funds as well as focus and visions of business enterprise.

Note 7. THE EFFECT OF RECENTLY ISSUED ACCOUNTING STANDARDS

Below is a listing of the most recent accounting standards SFAS 142-144 and their effect on the Company.

SFAS 146 Accounting for Costs Associated with Exit or Disposal Activities

This statement requires companies to recognize costs associated with exit or disposal activities, other than SFAS 143 costs, when they are incurred rather than at the date of a commitment to an exit or disposal plan. Examples of these costs are lease termination costs, employee severance costs associated with restructuring, discontinued operation, plant closing, or other exit or disposal activity. This statement is effective after December 15, 2002.

SFAS 147 Acquisitions of Certain Financial Institutions – an amendment of FASB Statement No. 72 and 144 and FASB Interpretation No. 9

This statement makes the acquisition of financial institutions come under the statements 141 and 142 instead of statement 72, 144 and FASB Interpretation No. 9. This statement is applicable for acquisition on or after October 1, 2002.

SFAS 148 Accounting for Stock-Based Compensation

This Statement amends FASB Statement No. 123, Accounting for Stock-Based Compensation, to provide alternative methods of transition for a voluntary change to the fair value based method of accounting for stock-based employee compensation. In addition, this Statement amends the disclosure requirements of Statement 123 to require prominent disclosures in both annual and interim financial statements about the method of accounting for stock-based employee compensation and the effect of the method used on reported results.

The adoption of these new Statements is not expected to have a material effect on the Company's financial position, results or operations, or cash flows.

Note 8. SEGMENT INFORMATION

Segment information is presented in accordance with SFAS 131, Disclosures about Segments of an Enterprise and Related Information. This standard is based on a management approach, which requires segmentation based upon the Company's internal organization and disclosure of revenue based upon internal accounting methods. Currently management divides revenue into two categories, earnings relative to tax lien certificates and real estate owned. To date, tax lien certificate earnings were \$2,316 and real estate owned earnings were \$0.

Note 9. COMPLIANCE WITH SARBANES-OXLEY ACT OF 2002

It is the intention of the Company's management to have its Board of Directors structured to comply with the Sarbanes-Oxley Act of 2002. The Company intends to attempt to attract potential independent directors to its board and to ask its shareholders to elect these potential directors at its next annual meeting. However, at this time, the Company's board of directors consists of four directors, all of which are insiders. At this time no directors are considered independent under the definitions of the Sarbanes-Oxley Act of 2002.

It should be noted that the Company may experience difficulties attracting independent directors because, at this time, it does not have Directors and Officers Liability Insurance in place.

In addition, the Company currently does not have in place an Audit Committee of the Board of Directors and therefore this committee does not currently comply with the Sarbanes-Oxley Act of 2002. The Sarbanes-Oxley Act of 2002 requires that the Audit Committee consist of three independent directors. Because the Board of Directors, as currently structured, does not have three independent directors, it is not feasible to structure the Audit Committee in compliance with the Sarbanes-Oxley Act of 2002. It is the intent of the Management of the Company to comply with the Sarbanes-Oxley Act of 2002 as it pertains to an Audit Committee as soon as it is practicable and independent directors can be attracted to the board. The due date set forth by the Securities and Exchange Commission for compliance was May 2004.

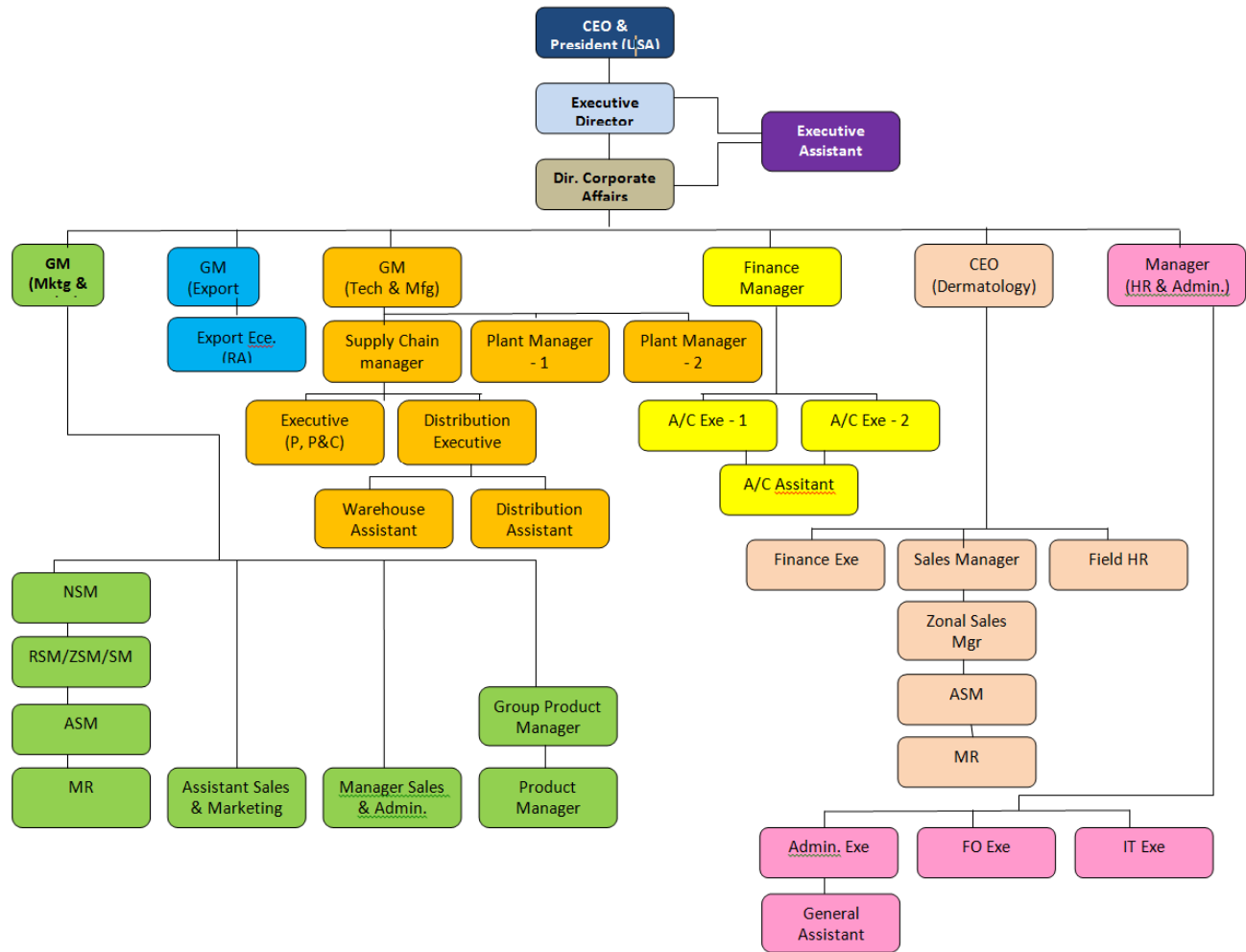
F-16

Item 4 Management's discussion and analysis or plan of operation.

Mission and Organizational Structure:

Sohm, Inc. (SHMN) is a generic drug manufacturer that produces and markets generic drugs for all major treatment categories globally. The core idea is to provide generics drugs cost effectively in order to bridge the gap between demand and supply . The Company not only works on applied innovation for branded generics but also provides support to white label manufacturing to build reach to ailing millions. The Company focuses on developing generic versions of brand-name products for which the patents are near expiration or expired. The Company competes on the basis of its low cost structure, aggressive growth, marketing strategy and focusing on underserved markets.

Organization Structure



Performance goals, Objectives and Results:

Non-Infringement and Early Introduction

Sohm actively reviews pharmaceutical patents and seeks opportunities to introduce its generic products where the patents have expired or are invalid. The Company intends to pursue its aggressive growth strategy through strategic alliances. These partnerships will help the Company acquire rights to pharmaceuticals, resolve patent barriers to entry while sharing development costs. The business strategy puts emphasis on non-infringement of established brand name pharmaceuticals coupled with speed of filing. The enlarged capacities through mergers, acquisitions and collaborations also bring about enlarged competencies and soft skills beyond machines and systems,

Low Cost Manufacturing Facility

The Company's manufacturing facility is located in Ahmedabad, India. The total available area is approximately 15,000 sq ft. and the current facility occupies approximately 10,500 sq ft. There is additional space available for future growth. The manufacturing facility is compliant with Current Good Manufacturing Practice (CGMP) Regulations: Division of Manufacturing and Product Quality and World Health Organization (WHO) regulations. The manufacturing facility is fully equipped and provides complete technical support for production activities. The location provides the Company with a low cost

advantage, including lower development costs, low fixed asset costs, low clinical trial costs and low cost of workers. The location also is surrounded by ecology of institutes from where steady supply of capable and trained professionals are easily available building competencies beyond machines and systems.

Focus on Underserved Markets

The Company intends to identify un-served or underserved niche markets to introduce its products. SHMN markets its products both directly and through partner alliance agreements. SHMN focuses on fast growing, underserved emerging markets in the Far East, South East Asia Africa, newly added European Union states, CIS Countries, and Latin America. These regions lack basic pharmaceuticals and branded drugs are either very expensive or unavailable largely. The Company recently expanded its generic drug distribution to address emerging pharmaceutical markets in Indonesia, Thailand, the Philippines and Malaysia. The Company expects to expand its range of generic pharmaceuticals through intensive research and development as well applied innovations in both generics, cosmeceuticals, and Nutraceuticals. The generic drug development strategy of the Company is represented below.

Financial Statements for the year 2013 are explained in this report.

Going Concerns

The current economic environment may pose a challenge for the Company in raising funds for business. The economic recovery in the developed world remains sluggish with doubts about sustainability of recovery. The Company must continually have access to the capital markets to raise funds for operations. Lack of working capital adequacy financing may hinder further growth and slow the implementation of the business plan. The increased stringency of regulatory controls, demand for increased technological advances and expansions of capacities can be vital for sustainable growth and timely availability of high value funds can accelerate the process. Building soft skill and management bandwidth is also linked with capacity reinforcements and working capital adequacies to attract, retain and deploy highly knowledge-based skill force.

The generic drugs market has significant upward growth potential. This has encouraged large and small players to tap into this opportunity. Increased competition may impact growth and margins negatively.

Pharmaceutical companies are using state and federal legislative and regulatory means to delay generic competition. If pharmaceutical companies succeed in limiting the use of generics, it would diminish SHMN's business prospects. We believe generic drugs will gain popularity as they are cost effective with the same physiological effectiveness.

Item 5 Legal proceedings.

NONE

Item 6 Defaults upon senior securities.

NONE

Item 7 Other information.

NONE

Item 8 Exhibits.

A - A complete copy of the Articles of incorporation is attached to this disclosure at annexure A

B - A complete copy of the issuer's by laws is attached to this disclosure at annexure B

Item 9 Certifications.

I, Shailesh Shah, certify that:

1. I have reviewed this annual disclosure statement of Sohm, Inc., (SHMN);
2. Based on my knowledge, this disclosure statement does not contain any untrue statement of a material fact or omit to state a material fact necessary to make the statements made, in light of the circumstances under which such statements were made, not misleading with respect to the period covered by this disclosure statement; and
3. Based on my knowledge, the financial statements, and other financial information included or incorporated by reference in this disclosure statement, fairly present in all material respects the financial condition, results of operations and cash flows of the issuer as of, and for, the periods presented in this disclosure statement.

Signed this 16th day of June 2015
President
SOHM, INC.



By: Shailesh Shah
President and CEO